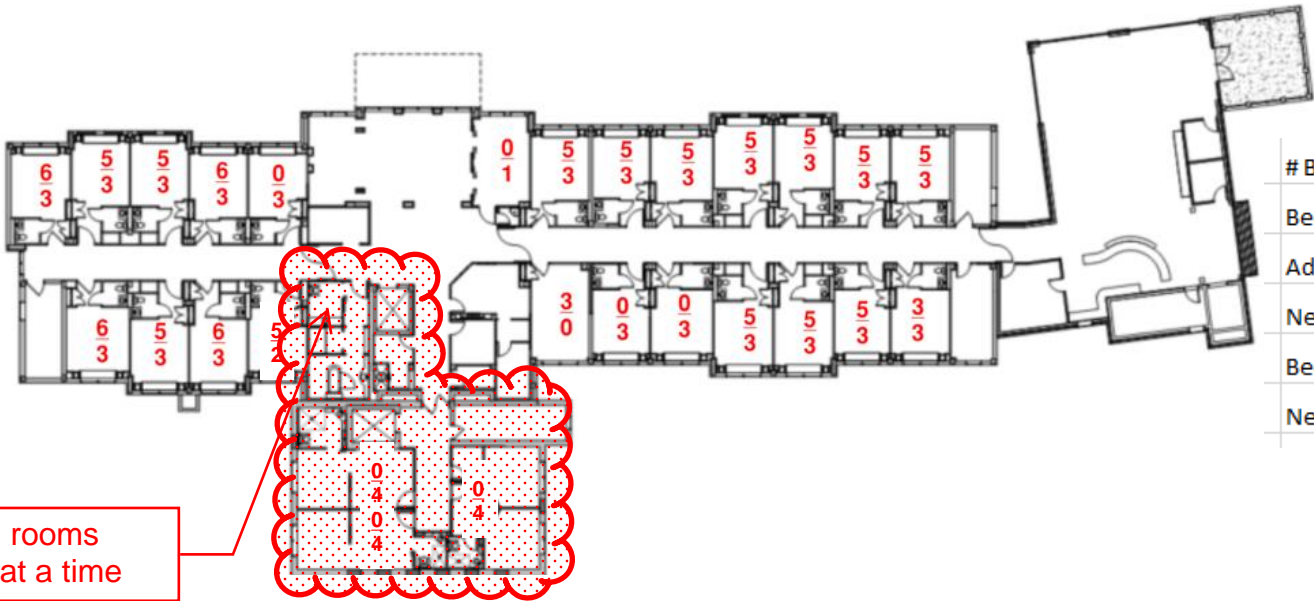


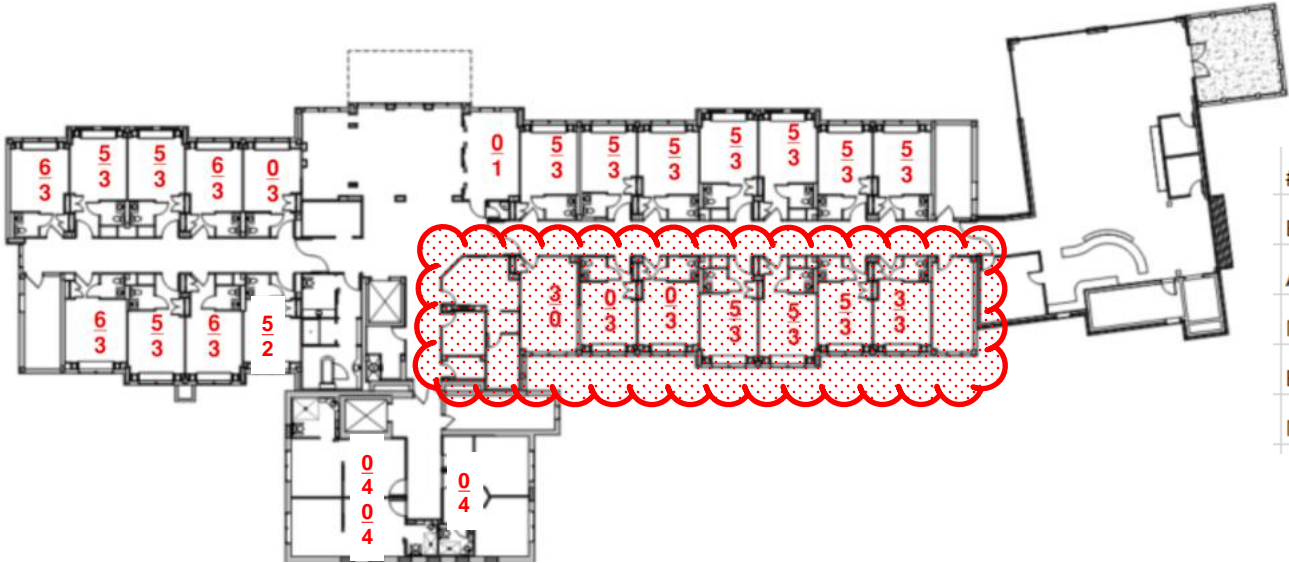
Phase 1



Bathing rooms  
done 1 at a time

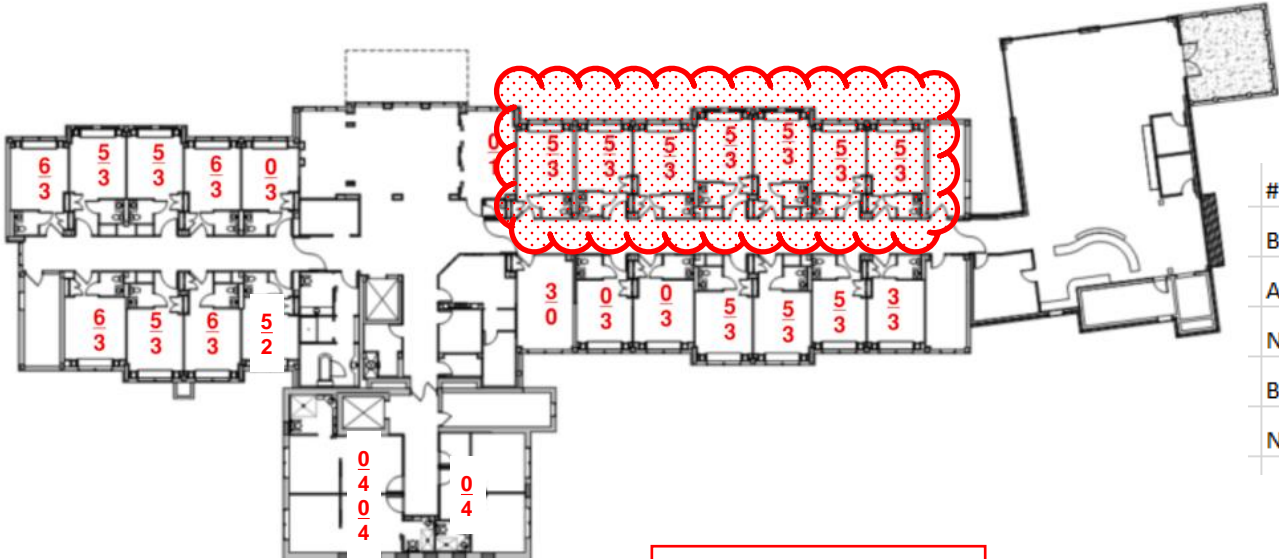
# Beds Available Before Phase	100	
Beds Lost During Phase	0	
Add'l Beds if Use Max Semi-Privates		n/a
Net Beds Available During Phase	100	
Beds Created During Phase	12	
Net Beds Available After Phase	112	

Phase 2



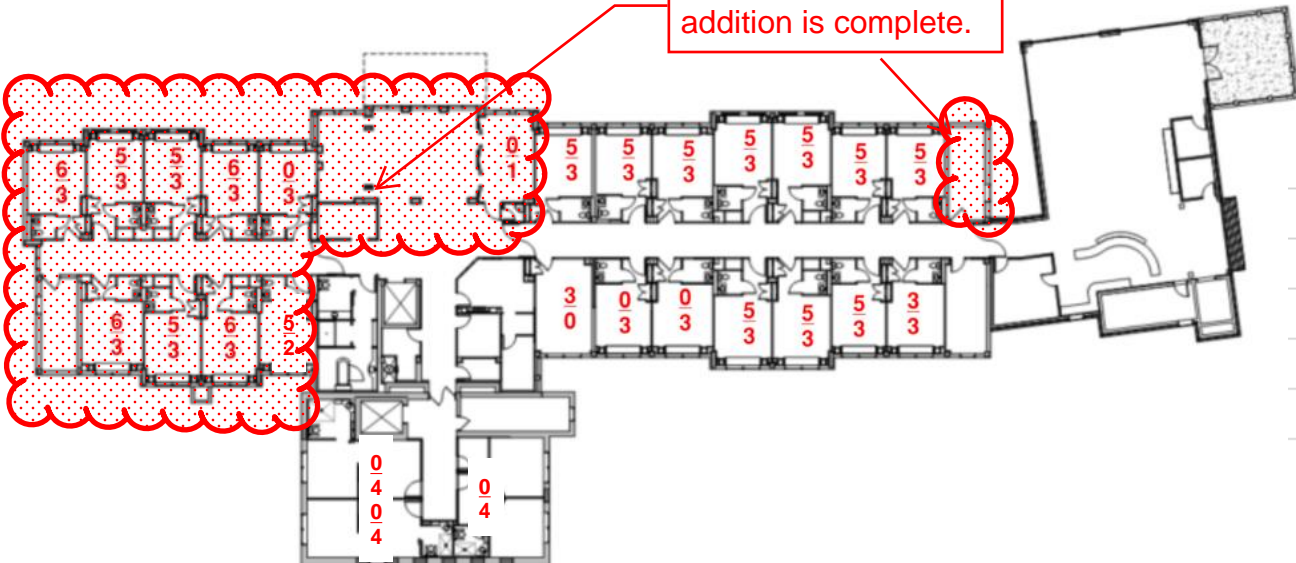
# Beds Available Before Phase	112	
Beds Lost During Phase	(21)	
Add'l Beds if Use Max Semi-Privates		n/a
Net Beds Available During Phase	91	
Beds Created During Phase	18	
Net Beds Available After Phase	109	

Phase 3



# Beds Available Before Phase	109	
Beds Lost During Phase	(35)	
Add'l Beds if Use Max Semi-Privates		12
Net Beds Available During Phase	74	86
Beds Created During Phase	21	
Net Beds Available After Phase	95	

Phase 4



This work done after  
addition is complete.

# Beds Available Before Phase	95	
Beds Lost During Phase	(44)	
Add'l Beds if Use Max Semi-Privates		26
Net Beds Available During Phase	51	77
Beds Created During Phase	27	
Net Beds Available After Phase	78	

6 = # beds in stack before  
3 = # beds in stack after