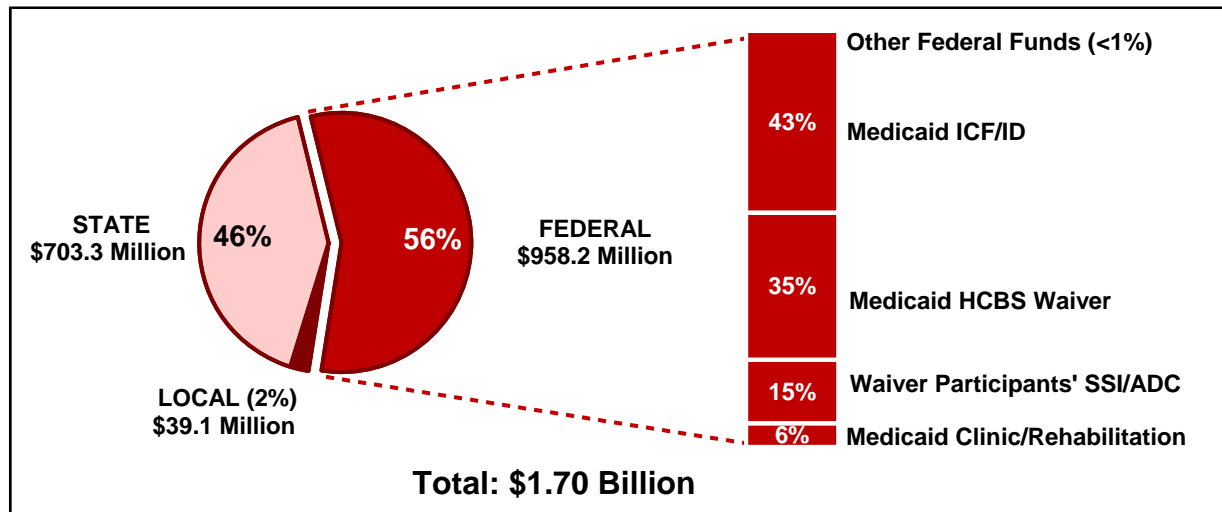
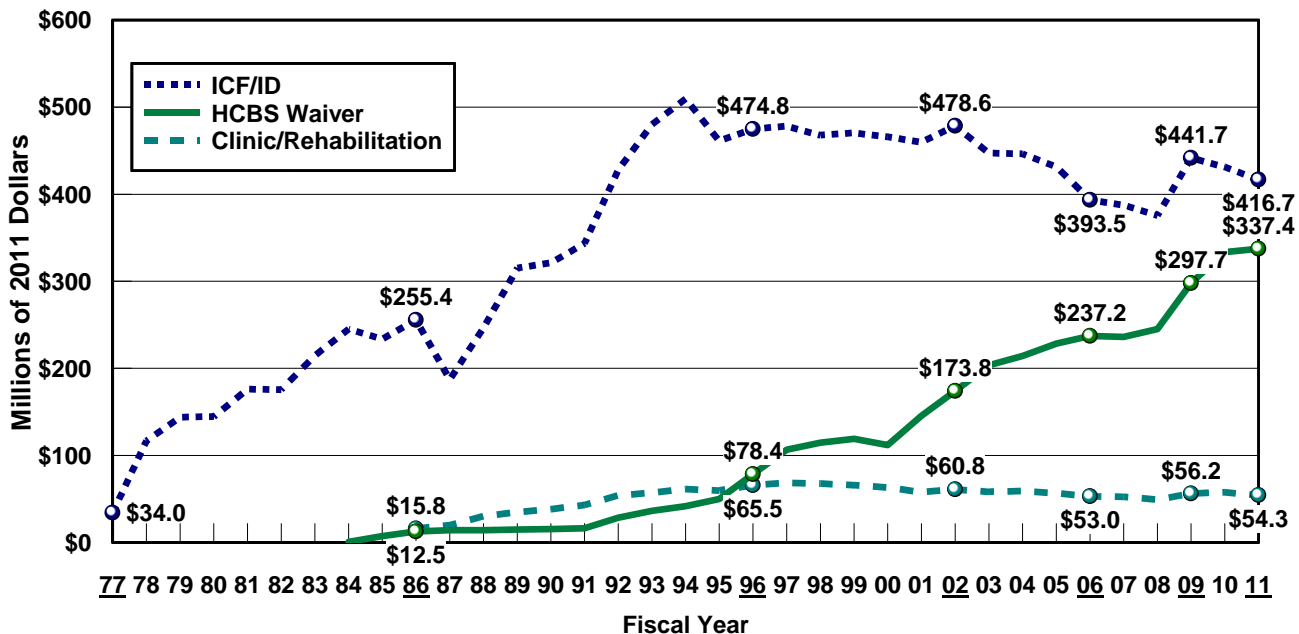


# ILLINOIS

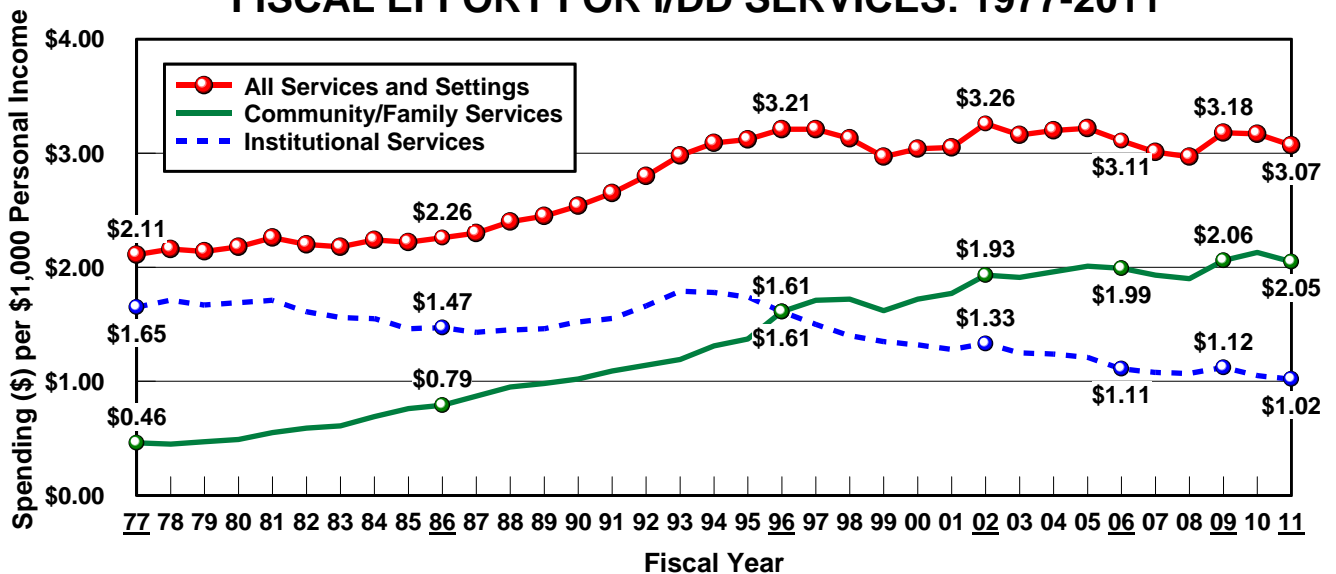
## PUBLIC I/DD SPENDING BY REVENUE SOURCE: FY 2011



## FEDERAL I/DD MEDICAID SPENDING BY REVENUE SOURCE



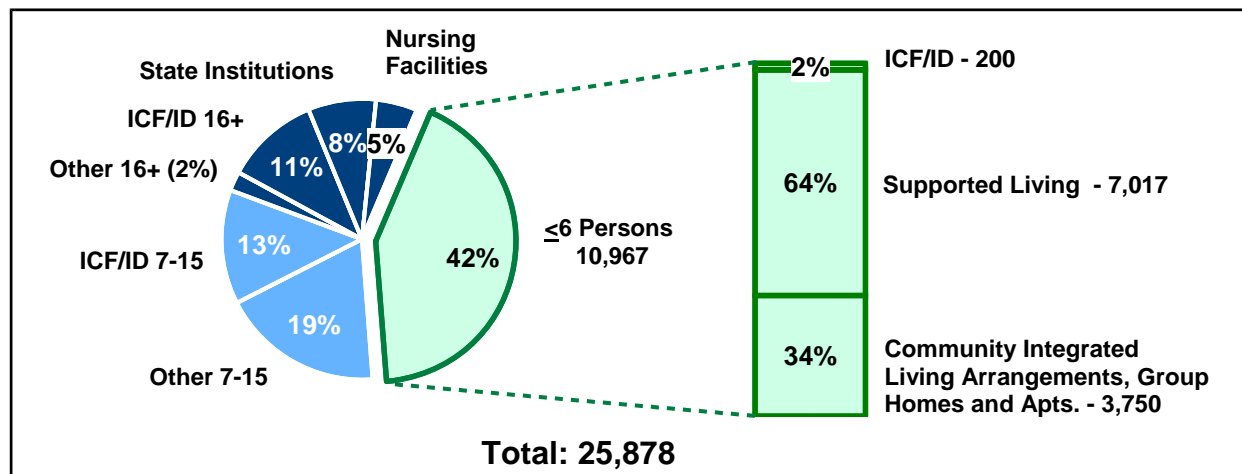
## FISCAL EFFORT FOR I/DD SERVICES: 1977-2011



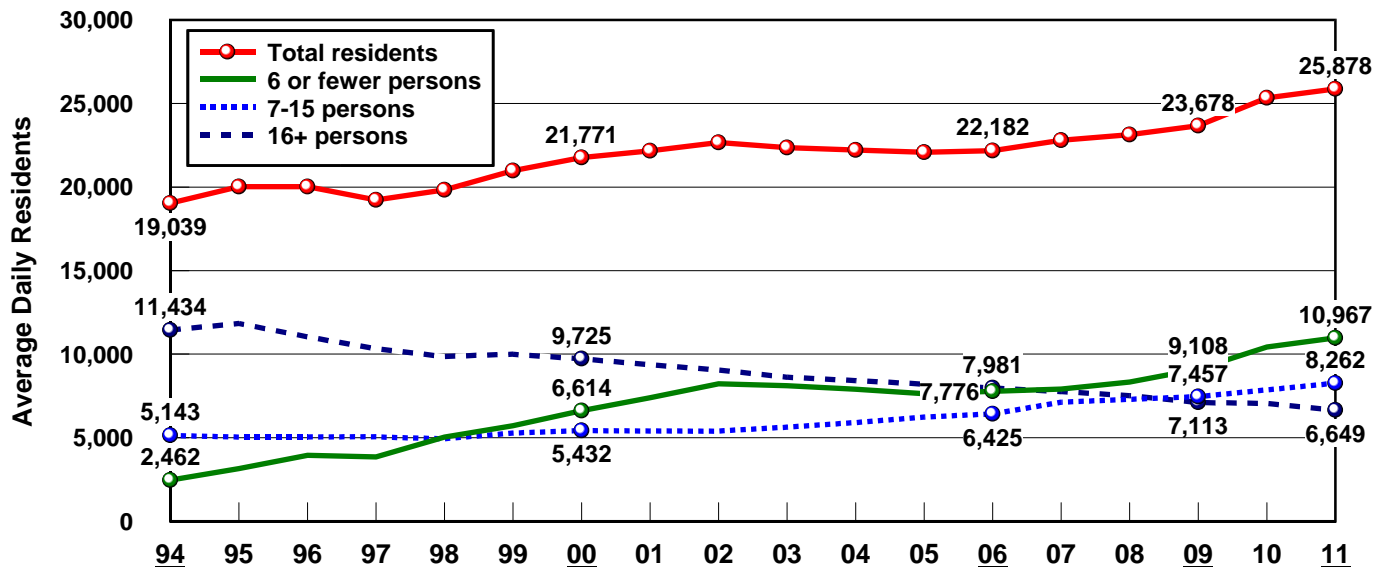
Source: Braddock et al., Coleman Institute and Department of Psychiatry, University of Colorado, 2013.

<http://stateofthestates.org>

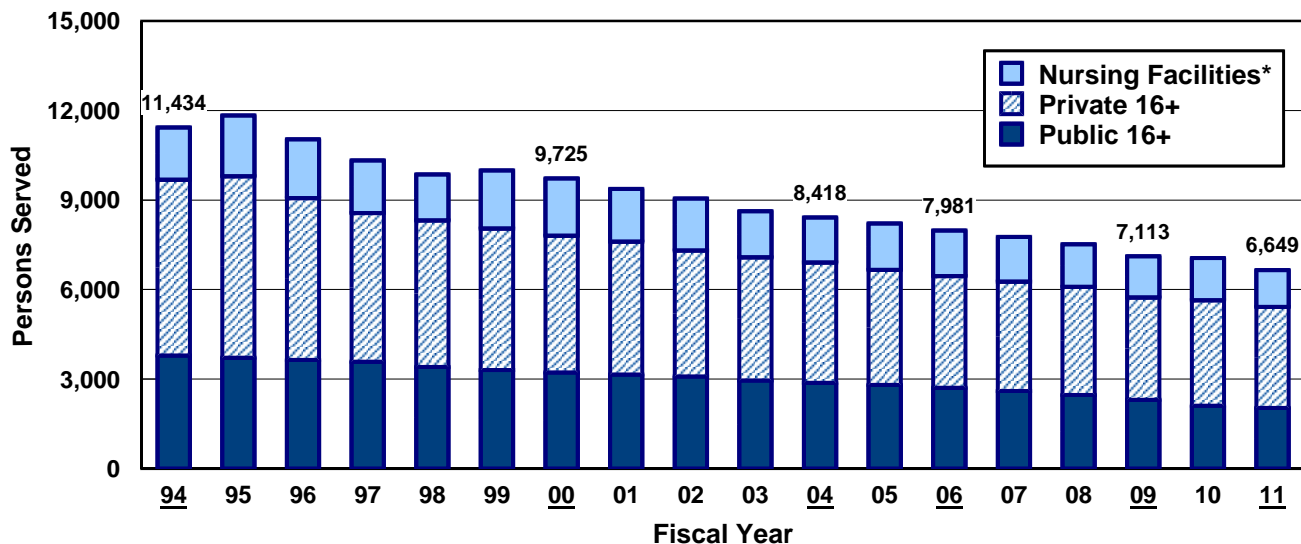
## PERSONS BY SETTING IN FISCAL YEAR 2011



## RESIDENTS WITH I/DD BY SIZE OF SETTING: 1994-2011



## PERSONS IN PUBLIC AND PRIVATE 16+ INSTITUTIONS: FY 1994-2011

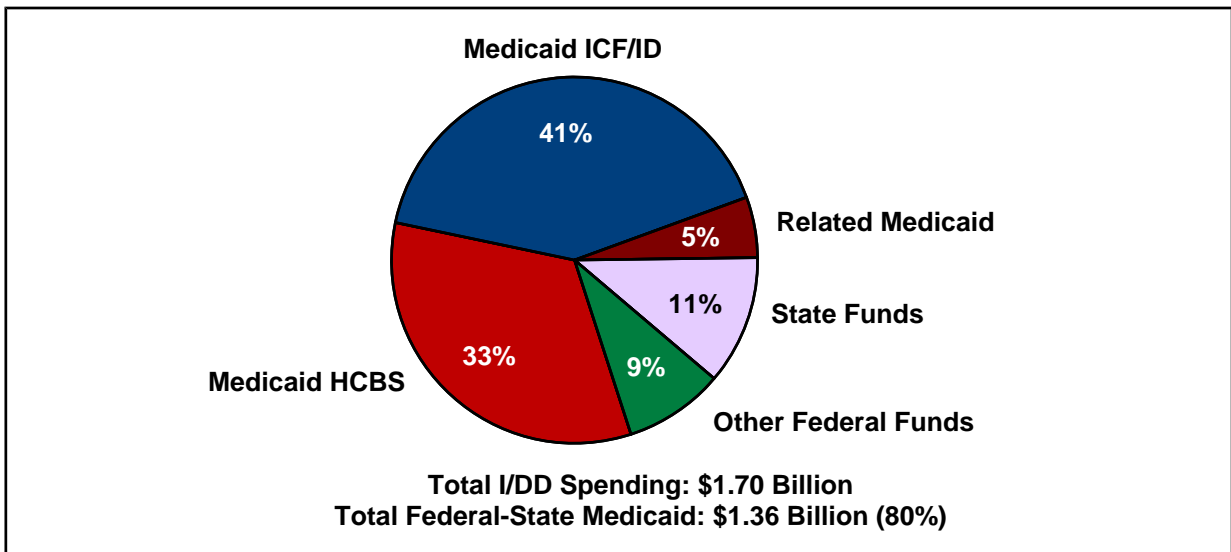


\*Nursing facility data for 1990-01 were provided by the state; 2002-09 data are from the CMS OSCAR online survey.

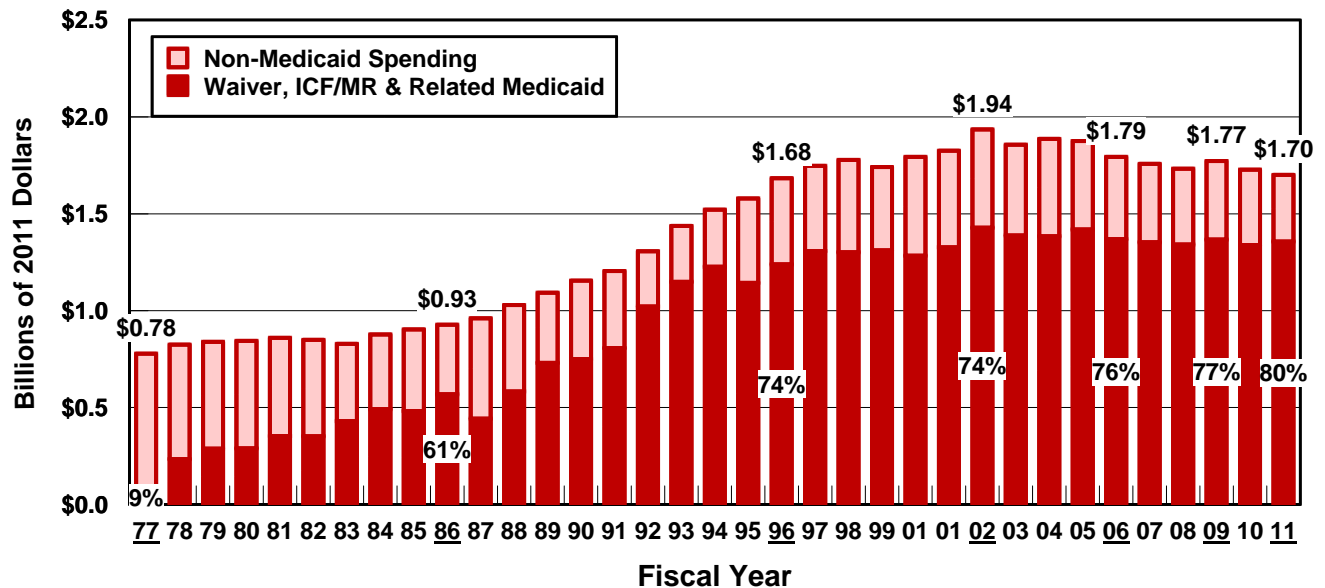
Source: Braddock et al., Coleman Institute and Department of Psychiatry, University of Colorado, 2013.

# ILLINOIS

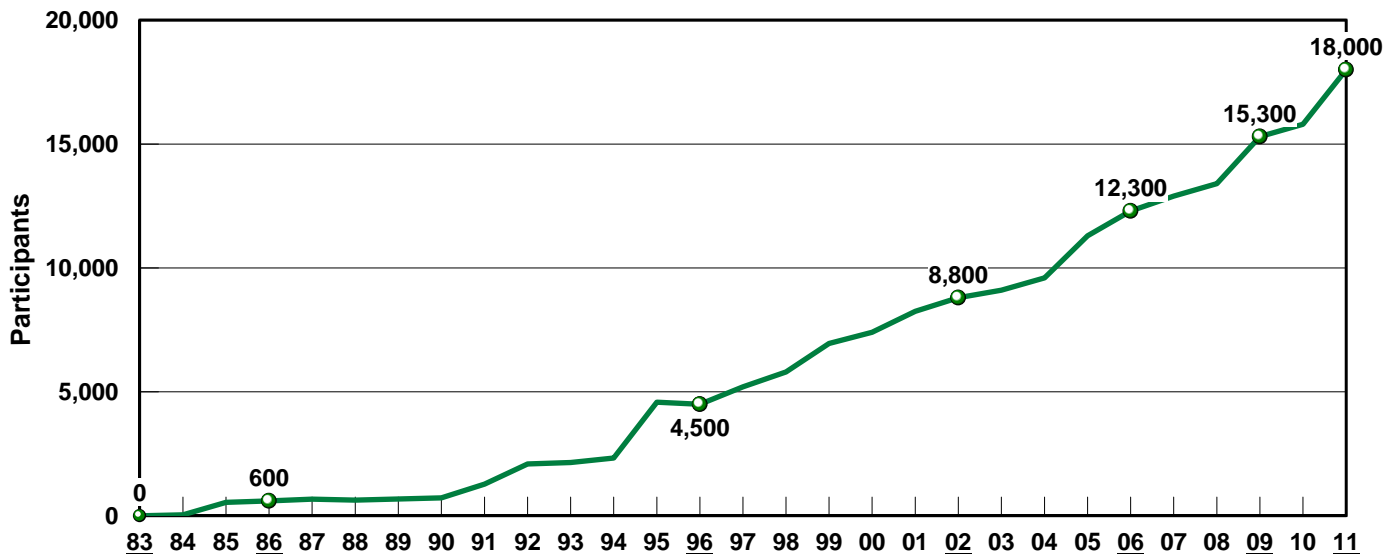
## MEDICAID IS 80% OF TOTAL I/DD SPENDING IN FY 2011



## MEDICAID COMPONENT OF PUBLIC I/DD SPENDING: FY 1977-2011

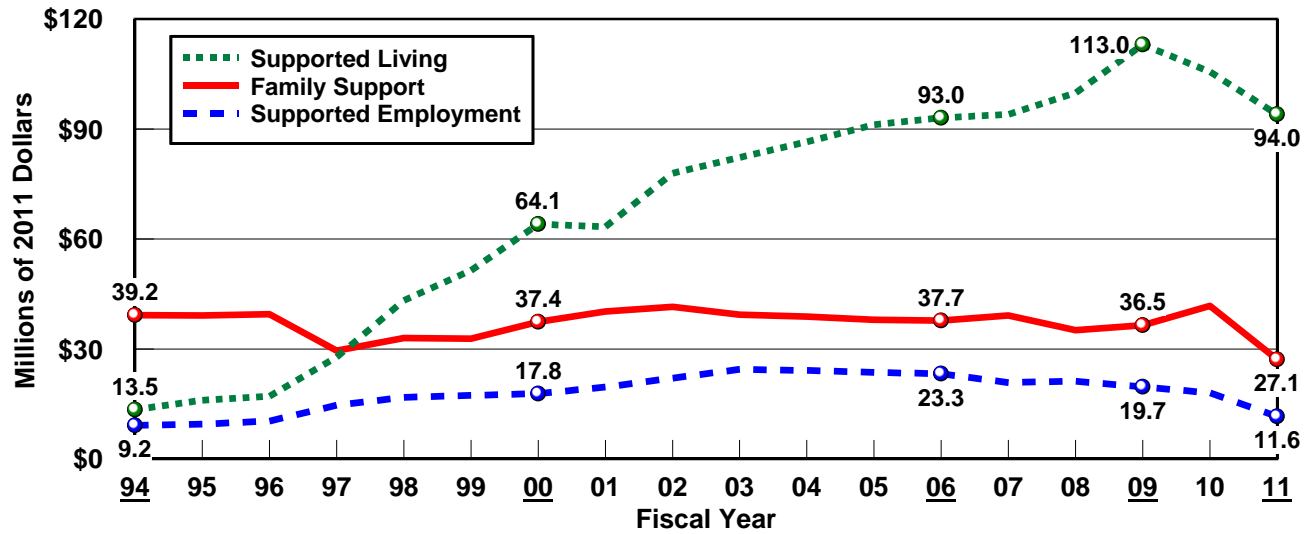


## HCBS WAIVER PARTICIPANTS: 1982-2011

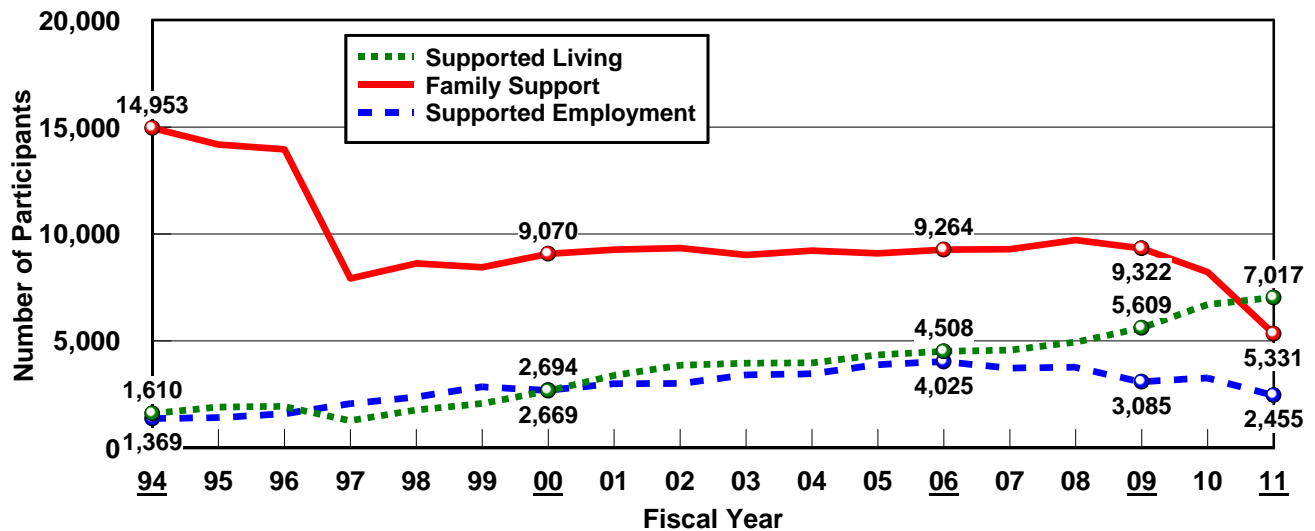


Source: Braddock et al., Coleman Institute and Department of Psychiatry, University of Colorado, 2013.

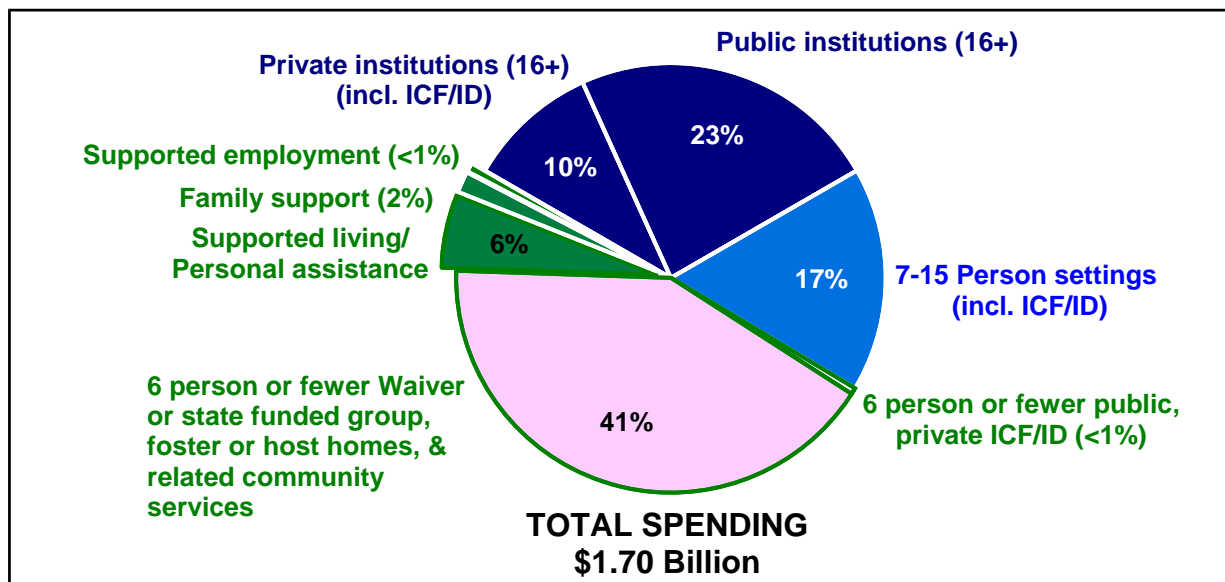
## INDIVIDUAL AND FAMILY SUPPORT SPENDING: 1994-2011



## PARTICIPANTS: 1994-2011



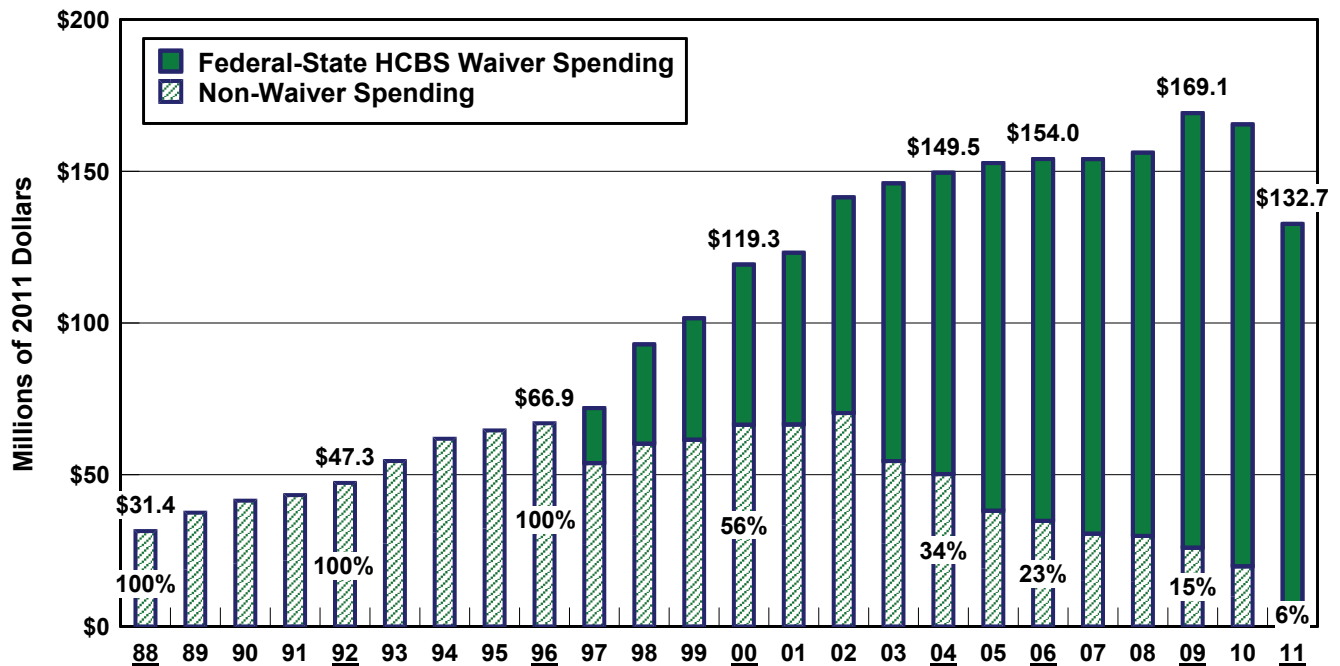
## SUPPORTED LIVING, FAMILY SUPPORT, AND SUPPORTED EMPLOYMENT (INDIVIDUAL AND FAMILY SUPPORT) WAS 7.8% OF TOTAL SPENDING: FY 2011



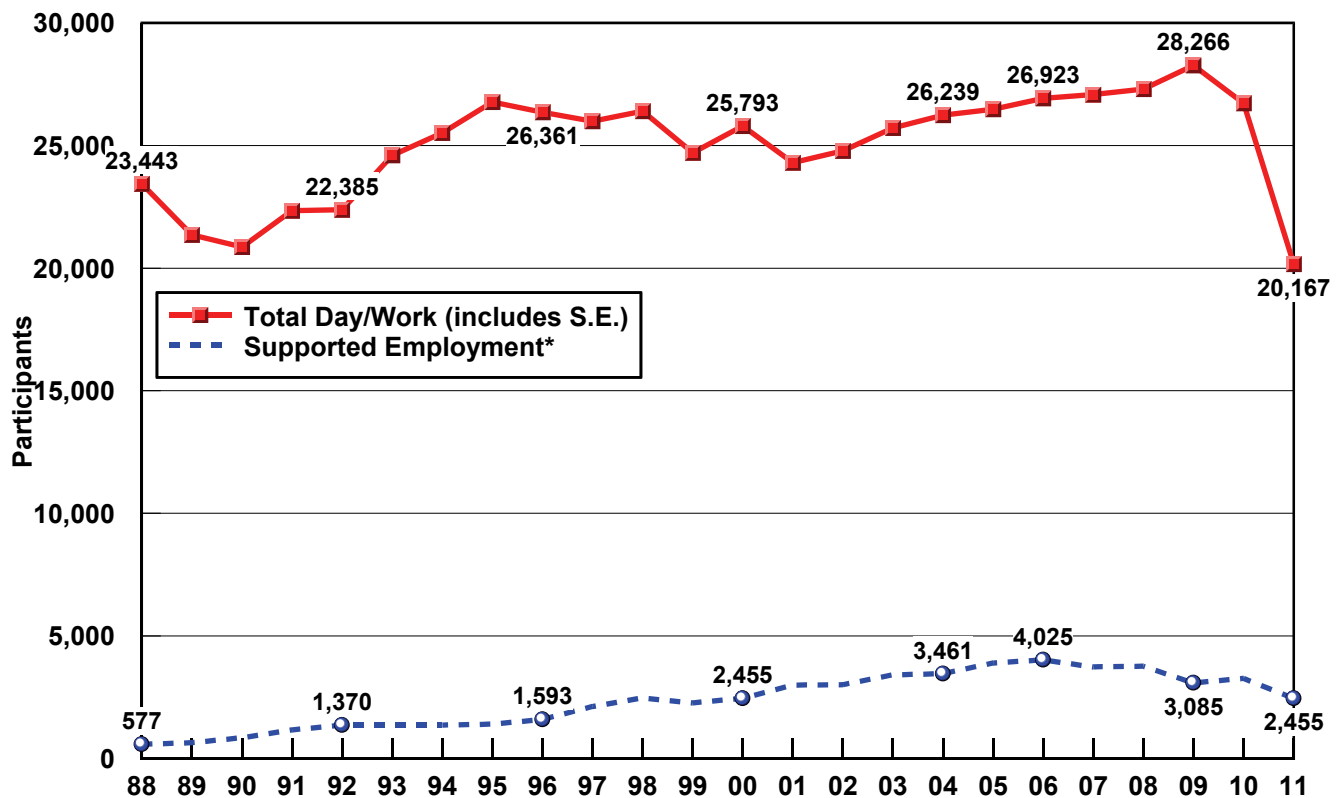
Source: Braddock et al., Coleman Institute and Department of Psychiatry, University of Colorado, 2013.

# ILLINOIS

## SUPPORTED LIVING, FAMILY SUPPORT AND SUPPORTED EMPLOYMENT SPENDING: FY 1988-2011



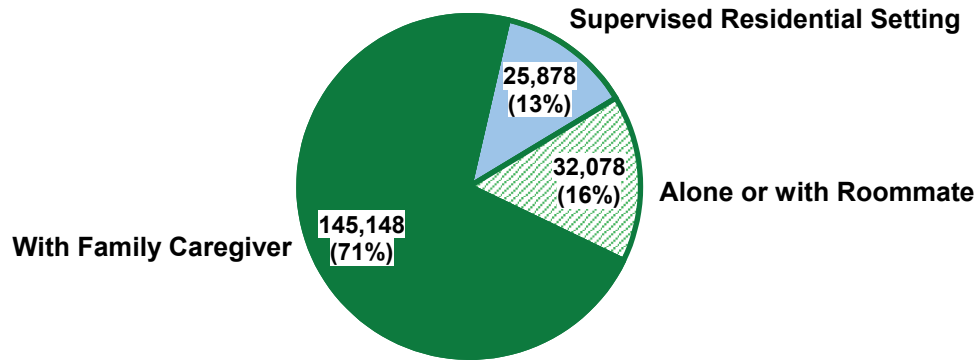
## DAY/WORK AND SUPPORTED EMPLOYMENT PARTICIPANTS: FY 1988-2011



\*Supported employment data include prevocational habilitation participants from 1989-1998.

Source: Braddock et al., Coleman Institute and Department of Psychiatry, University of Colorado, 2013.

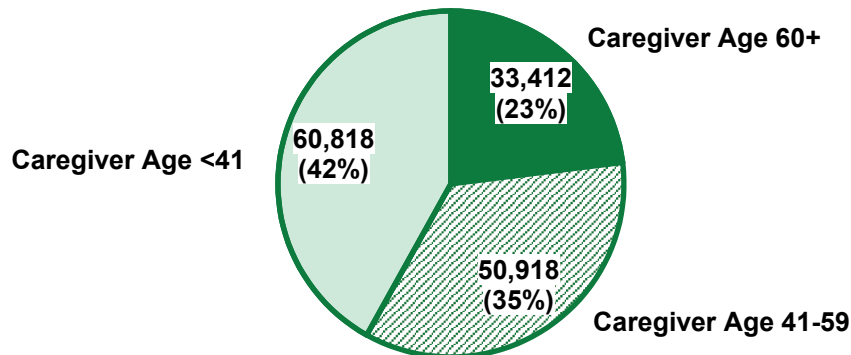
### ESTIMATED NUMBER OF INDIVIDUALS WITH I/DD BY LIVING ARRANGEMENT: FY 2011



**TOTAL: 203,104 PERSONS**

Braddock et al. 2013, based on Fujiura 2012

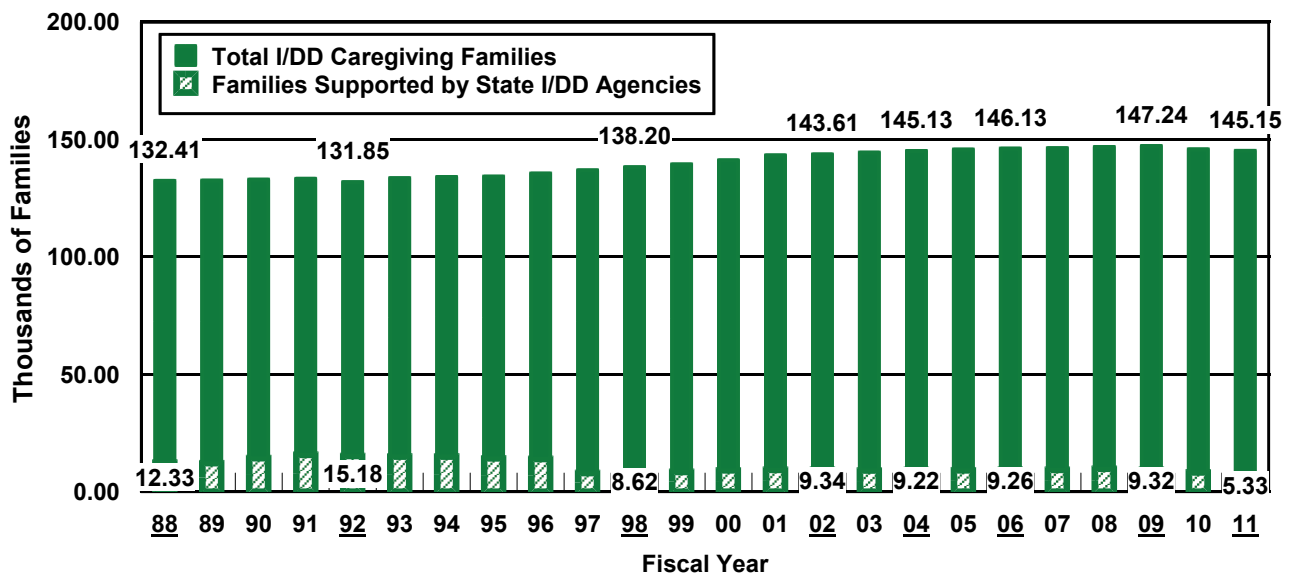
### ESTIMATED NUMBER OF INDIVIDUALS WITH I/DD BY AGE GROUP LIVING WITH FAMILY CAREGIVERS: FY 2011



**TOTAL: 145,148 PERSONS**

Braddock et al. 2013, based on Fujiura 2008, 2012

### ESTIMATED NUMBER OF I/DD CAREGIVING FAMILIES AND FAMILIES SUPPORTED BY I/DD AGENCIES: FY 1988-2011



Source: Braddock et al., Coleman Institute and Department of Psychiatry, University of Colorado, 2013.

<http://stateofthestates.org>