



Fresenius Medical Care

March 15, 2012

Ms. Courtney Avery
Administrator
Illinois Health Facilities & Services Review Board
525 W. Jefferson Street, 2nd Floor
Springfield, IL 62761

Re: Additional Information

Project: #11-099, Fresenius Medical Care Prairie Meadows

Dear Ms. Avery,

The enclosed pages contain additional information for the above mentioned project to be heard at the April 17th State Board meeting.

Thank you for your time and consideration of this information.

Sincerely,

Lori Wright
Senior CON Specialist

cc: Clare Ranalli

SUPPLEMENTAL INFORMATION

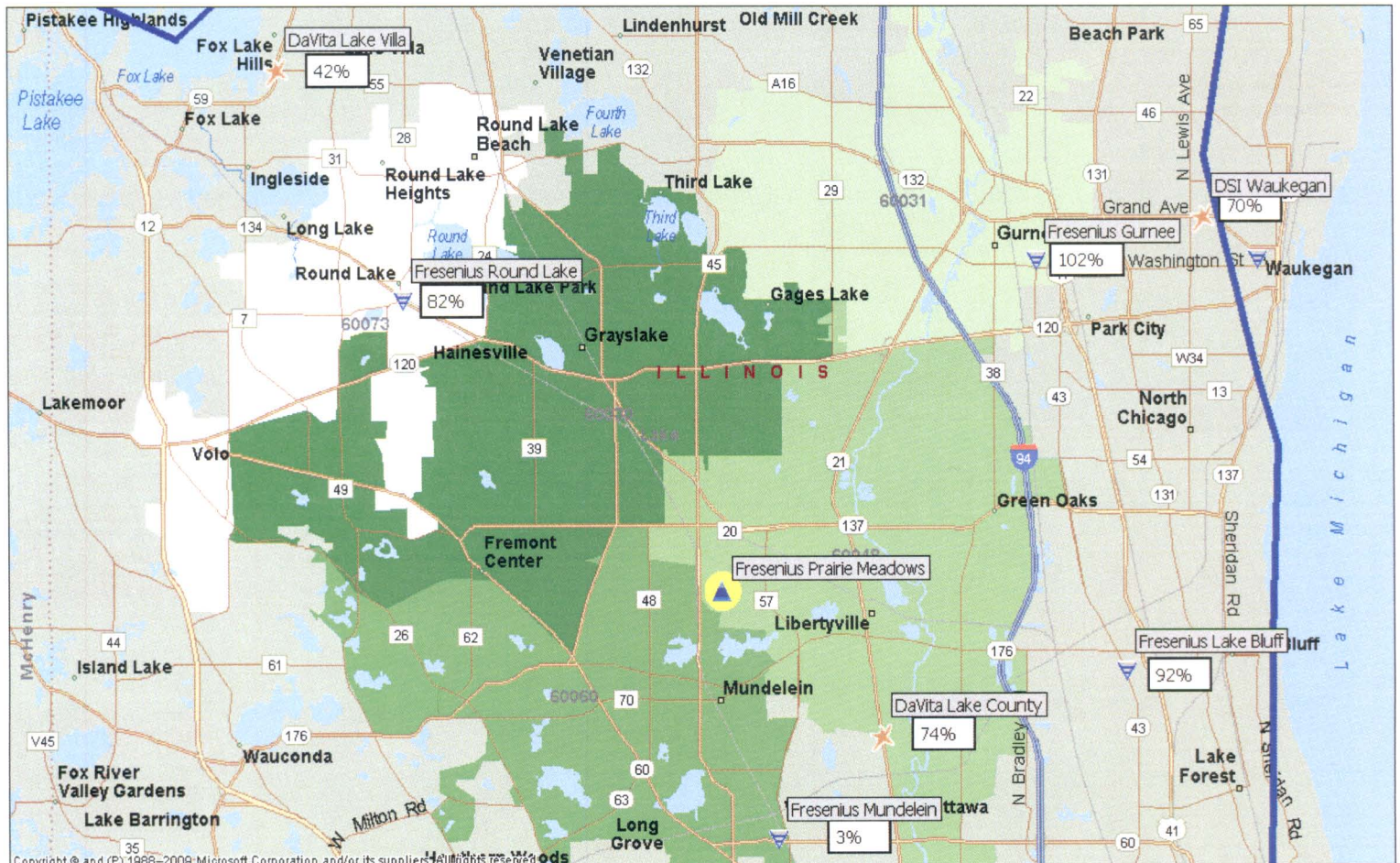
#11-099 Fresenius Medical Care Prairie Meadows

Fresenius Medical Care is submitting this additional information for the Board's consideration in their review of the Prairie Meadows 12-station ESRD facility to be located in Libertyville.

Name	Address	City	ZIP Code	MapQuest		Adjusted Time	Independent Travel Study	Stations	Dec-11 Utilization
				Miles	Time				
DaVita Lake County	918 S Milwaukee Ave	Libertyville	60048	4.7	10	11.5	11.3	16	73.96%
Fresenius Mundelein	1400 Townline Road	Mundelein	60060	5.22	12	13.8	13.7	12	2.78%
Fresenius Round Lake	401 Nippersink Ave	Round Lake	60073	7.42	14	16.1	16.3	16	82.29%
Fresenius Lake Bluff	101 Waukegan Rd	Lake Bluff	60044	9.37	15	17.25	18	16	91.67%
Fresenius Gurnee	101 N Greenleaf Ave	Gurnee	60031	9.41	14	16.1	19	14	102.38%
DaVita Waukegan	1616 Grand Ave	Waukegan	60085	12.57	21	24.15	23.7	22	70.45%
DaVita Lake Villa	37809 SR-59	Lake Villa	60046	13.14	22	25.3	26.3	12	41.67%

In its application for this facility, the applicant listed facilities within 30 minutes travel time per MapQuest adjusted. A supplemental travel study has subsequently been conducted by a Professional Traffic Operations Engineer to more accurately identify the 30 minute travel area. The results are as follows: (see attached certified report)
Overall utilization of clinics within 30 minutes is 66%, however if you take the Mundelein facility out of the calculation the overall utilization is 77% (this facility is not yet certified and is allowed by Board rules 2 years to reach 80% target utilization).

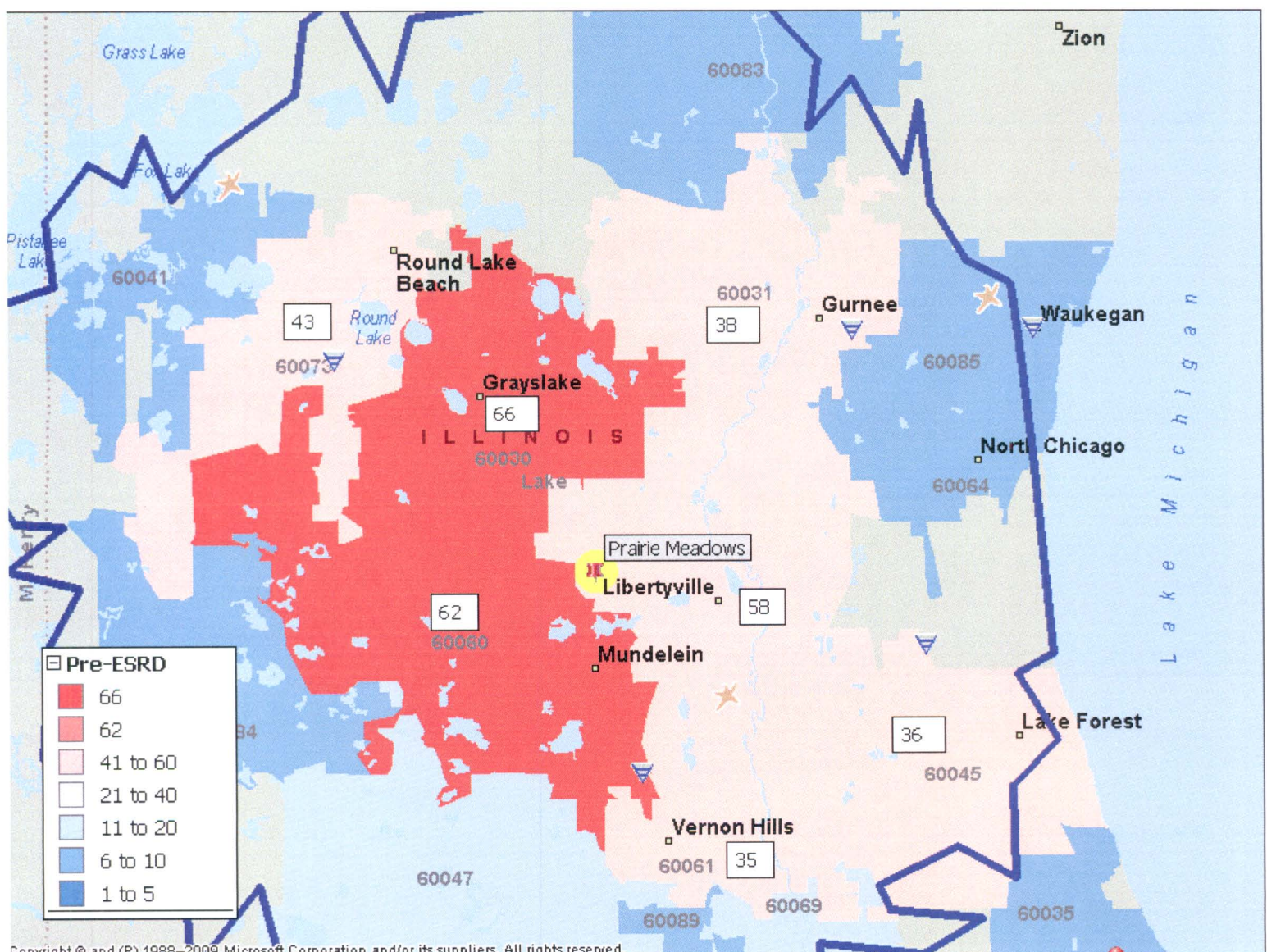
Facilities Within 30 Minutes Travel Time w/Pre-ESRD & 12/2011 Utilization



To further support this project an analysis of pre-ESRD patients identified to be referred to the closest facilities to the Prairie Meadows site was conducted.

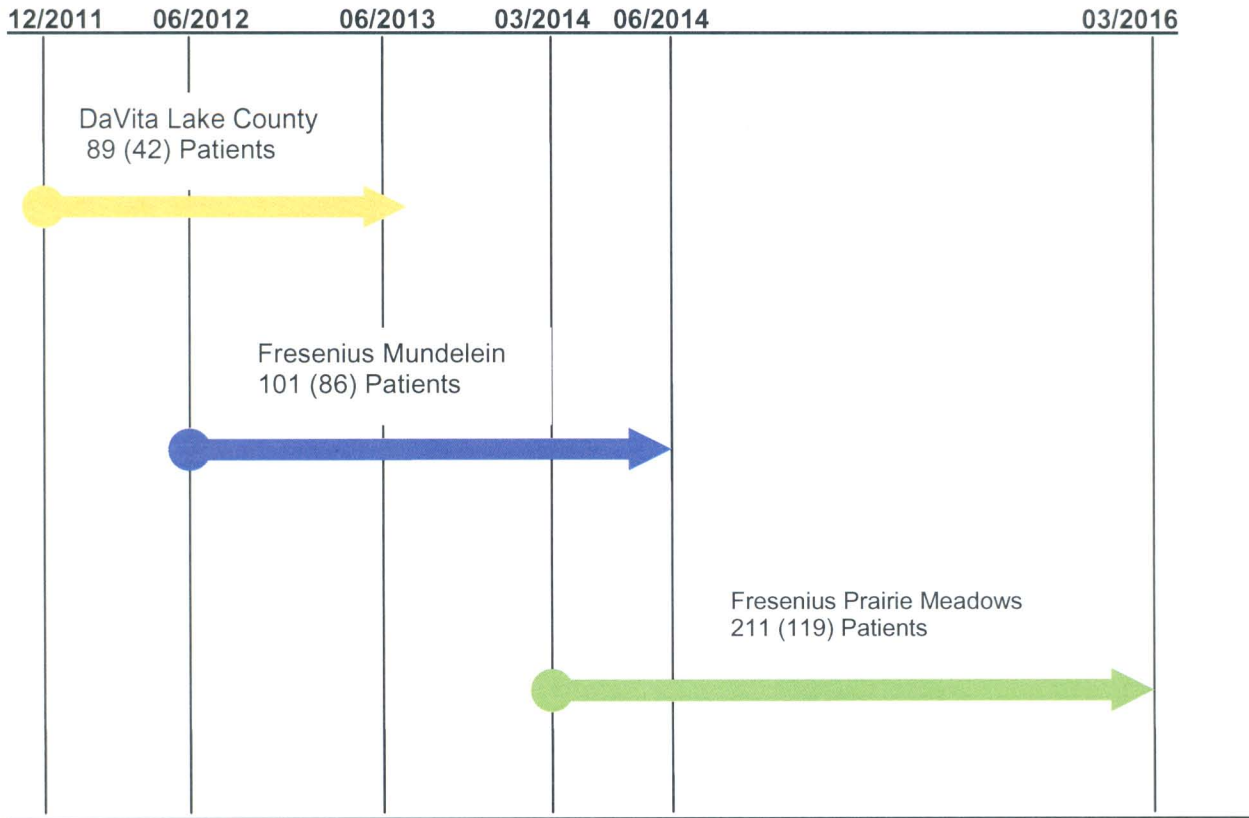
- In the **Fresenius Prairie Meadows** application Dr. Trob certified that he had a total of 211 pre-ESRD patients who live in the immediate Libertyville area (119 of which he expects to be referred to the proposed facility between 03/31/2014 and 03/31/2016.
- In the **DaVita Lake County** (#11-114) relocation/expansion Dr. Steinmuller, from a separate practice, certified that there were 89 pre-ESRD patients that reside in the area that would be referred to that facility (42 after patient attrition accounted for) between 12/2011 and 06/2013.
- In the **Fresenius Mundelein** (#10-036) application to establish that facility, Drs. Patel and Nora, from another separate practice, certified that they had 101 pre-ESRD patients (86 after patient attrition) that they would refer to the Mundelein facility between 06/30/2012 and 06/30/2014.

Total of All Pre-ESRD for Area From Three Separate Practices



The total of all patients identified from these three separate applications and practices amount to 401 (247 after patient attrition) pre-ESRD patients that will be referred from the Libertyville/Grayslake/Mundelein/Round Lake/Gurnee area of central Lake County.

TIMELINE OF IDENTIFIED REFERRALS



These patients are going to be referred over a five year period stretching from 12/2011 through early 2016. Of these three projects, the need has only been addressed for one group of patients, those from Drs. Patel and Nora by the establishment of the Mundelein facility. Looking to the future, two to three years from now, additional stations will be needed as these patients begin requiring dialysis treatment. It takes approximately 18 to 24 months for a dialysis facility to become fully operational from the date of approval. Fresenius Medical Care, as are other providers in this area, is planning for these identified patients now, while there is still capacity in the area. If dialysis providers wait until all clinics become full before submitting for additional access, patients will be left with little or no dialysis treatment options while waiting through the CON process and then the 18-24 months for a facility to open.

The patients represented above are only a portion of the current existing pre-ESRD patients in the region. There are many more nephrology practices treating patients with chronic kidney disease in Lake County that are not accounted for in this analysis that will have decreased access to treatment options in the future if proper healthcare planning is not done now.

HSA 8 POPULATION & ESRD GROWTH

The overall population in Illinois over the past decade has grown only 3% according to the U.S. Census Bureau, however during the same time the population in HSA 8 has grown 17% contributing to the increase in the ESRD population as seen below.

Illinois Population Figures

Illinois Population Growth		
2000	2010	% Growth
12,419,293	12,830,632	3%

HSA 8 Population Growth

H S A 8 Population Growth			
County	2000	2010	% Growth
Kane	404,119	515,269	28%
Lake	644,356	703,462	9%
McHenry	260,077	308,760	19%
Total	1,308,552	1,527,491	17%

HSA 8 Aged Growth

H S A 8 Population Age 65 and over			
County	2000	2010	% Growth
Kane	33,981	49,690	46%
Lake	54,989	139,987	155%
McHenry	20,913	31,320	50%
Total	109,883	220,997	101%

Included in the high population growth of HSA 8 over the past decade is a dramatic increase of the population over age 65, especially in Lake County. There has also been a 60% growth of the Hispanic population (as seen below). This population has a doubled risk of diabetes or hypertension leading to kidney failure.

HSA 8 Hispanic Population Growth

H S A 8 Hispanic Population Growth			
County	2000	2010	% Growth
Kane	95,924	158,390	65%
Lake	92,716	139,987	51%
McHenry	19,602	35,249	80%
Total	208,242	333,626	60%

H S A 8 Hispanic % of Population		
2000	2010	% Change
24%	31%	30%
14%	20%	38%
8%	11%	51%
16%	22%	37%

HSA 8 ESRD Population Figures

H S A 8	Network ESRD Patients					Annual Growth			
County	2007	2008	2009	2010	2011	08 vs 07	09 vs 08	10 vs 09	11 vs 10
Lake	604	617	638	676	713	2%	3%	6%	5%
McHenry	144	166	181	193	192	15%	9%	7%	-1%
Kane	433	479	513	483	512	11%	7%	-6%	6%
Totals	1,181	1,262	1,332	1,352	1,417	7%	6%	2%	5%

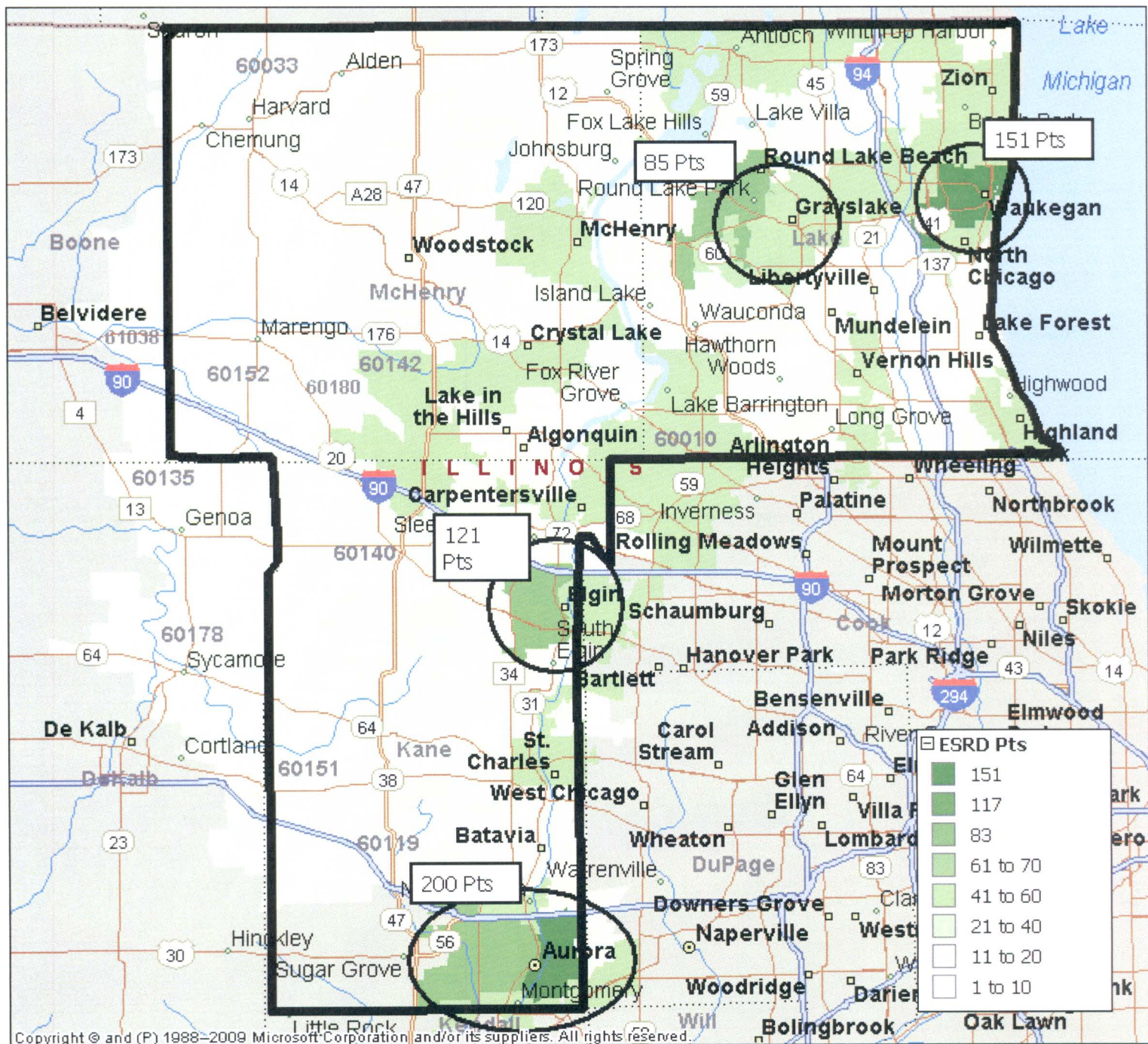
The ESRD growth in the area correlates to the increase that Dr. Trob has seen in his practice. ESRD growth in Illinois has been approximately 3% average yearly according to the Renal Network. Lake County, in 2011 experienced a 5% ESRD growth. HSA 8, which is comprised of Lake, McHenry and Kane Counties, also experienced 5% ESRD growth in 2011, exceeding the State and National Averages.

On a national level, the annual increase of ESRD patients has been between 1.9% and 2.4% between 2003 & 2009 according to the 2011 United States Renal Data System (USRDS) Annual Data Report (see excerpt from report attached).

As seen on the map below, there are 4 major population groups of ESRD patients in HSA 8. Waukegan, Round Lake-Grayslake Area, Elgin and Aurora.

The Prairie Meadows facility will serve Dr. Trob's patients who reside in the Round Lake-Grayslake-Libertyville area. The notable patient population in this area further supports Dr. Trob's doubling of pre-ESRD patients.

The Prairie Meadows area is not a medically underserved area, however the remaining three areas of high ESRD population are. Fresenius Medical Care has recently opened a facility in Waukegan and in Elgin to serve this underserved population and is proposing to open another in the underserved Aurora community.



Dr. Trob is currently Medical Director of the Fresenius Lake Bluff facility operating at 92% utilization. He is a young physician with a growing practice who approached us to meet the demand he sees in his practice. To address this demand he has added a partner to his practice, Dr. Munir. They are both strong supporters of home dialysis therapies. The quality measures at the Lake Bluff clinic are outstanding. 94% of patients there had a $URR \geq 65\%$ and 97% of patients had a $Kt/V \geq 1.2$. These two lab values tell the clinician if the patient is getting adequate dialysis treatments.

MEMORANDUM



TO: MS. LORI WRIGHT
FRESENIUS MEDICAL CENTER

FROM: STEPHEN B. CORCORAN, P.E., PTOE
DIRECTOR OF TRAFFIC ENGINEERING

DATE: JANUARY 25, 2012

RE: TRAVEL TIME SURVEYS
PROPOSED FRESENIUS MEDICAL FACILITY
900 TECHNOLOGY WAY
LIBERTYVILLE, ILLINOIS

This memorandum summarizes the travel time surveys conducted for a proposed Fresenius Medical facility to be located at 900 Technology Way in Libertyville, Illinois. The purpose of the study was to determine the average one-way travel times between existing/planned dialysis centers and the proposed location pursuant to the methodology required by the Illinois Health Facilities & Services Review Board. The travel surveys were to and from the following facilities:

<u>Facility</u>	<u>Street Address</u>	<u>City</u>
1) DaVita Lake County	918 S. Milwaukee Ave.	Libertyville
2) Fresenius Mundelein	1400 Town Line Road	Mundelein
3) Fresenius Round Lake	401 Nippersink Ave.	Round Lake
4) Fresenius Gurnee	101 N. Greenleaf Ave.	Gurnee
5) Fresenius Lake Bluff	101 Waukegan Road	Lake Bluff
6) DaVita Waukegan	1616 Grand Avenue	Waukegan
7) DaVita Buffalo Grove	1291 Dundee Road	Buffalo Grove
8) Fresenius Waukegan Harbor	110 N. West Street	Waukegan
9) DaVita Lake Villa	37809 SR-59	Lake Villa
10) Fresenius Palatine	691 E. Dundee Road	Palatine

The surveys were conducted between the hours of 6:30 AM and 6:30 PM. Three travel runs were conducted for each facility with two runs occurring in the midday period from 9:30 AM to 3:30 PM. The third run was conducted in the evening peak period from 3:30 PM to 6:30 PM.

The average one-way travel times for each facility are summarized below. **Table 1** (attached) provides a detailed listing of each travel run.

Average Travel Time Survey Results

	<u>Facility</u>	<u>Average Travel Time (One-Way)</u>
1)	DaVita Lake County	11.3 minutes
2)	Fresenius Mundelein	13.7 minutes
3)	Fresenius Round Lake	16.3 minutes
4)	Fresenius Gurnee	19.0 minutes
5)	Fresenius Lake Bluff	18.0 minutes
6)	DaVita Waukegan	23.7 minutes
7)	DaVita Buffalo Grove	30.8 minutes
8)	Fresenius Waukegan Harbor	30.2 minutes
9)	DaVita Lake Villa	26.3 minutes
10)	<u>Fresenius Palatine</u>	<u>32.7 minutes</u>
	Average of All Facilities	22.2 minutes

Professional Certification

I hereby certify that these documents were prepared or approved by me, and that I am a duly licensed professional engineer under the laws of the State of Illinois.
License No. 062.046487, and Expiration Date: November 30, 2013.

I am Professional Traffic Operations Engineer - No. 380 Expiration Date: November 2014.



Stephen B. Corcoran, P.E., PTOE



Table 1

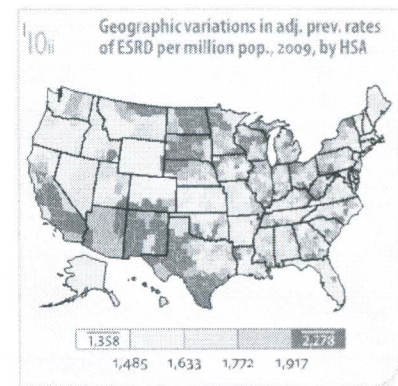
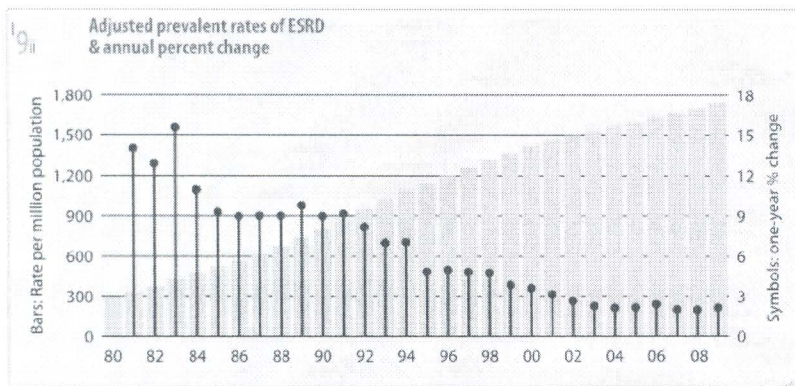
FMC Libertyville Travel Runs

900 Technology Way; Libertyville, Illinois

One-Way Travel Times (minutes)				One-Way Travel Times (minutes)			
<u>Direction</u>	<u>Date</u>	<u>Day</u>	<u>Time</u> <u>Start</u>	<u>End</u>	<u>Run</u>	<u>Average</u>	<u>Run</u> <u>Average</u>
1 - DaVita Lake County (918 S. Milwaukee Avenue; Libertyville Road)							
To DaVita Libertyville	1/18/2012	Wednesday	11:15 AM	11:25 AM	10		
To FMC Libertyville	1/18/2012	Wednesday	11:27 AM	11:38 AM	11		
To DaVita Libertyville	1/18/2012	Wednesday	12:54 PM	1:04 PM	10		
To FMC Libertyville	1/18/2012	Wednesday	1:05 PM	1:17 PM	12		
To DaVita Libertyville	1/18/2012	Wednesday	4:30 PM	4:41 PM	11		
To FMC Libertyville	1/18/2012	Wednesday	4:42 PM	4:56 PM	14	11.3	
2 - Fresenius Mundelein (1400 Townline Road; Mundelein, Illinois)							
To FMC Mundelein	1/18/2012	Wednesday	11:39 AM	11:52 AM	13		
To FMC Libertyville	1/18/2012	Wednesday	11:58 AM	12:10 PM	12		
To FMC Mundelein	1/18/2012	Wednesday	1:19 PM	1:32 PM	13		
To FMC Libertyville	1/18/2012	Wednesday	1:33 PM	1:46 PM	13		
To FMC Mundelein	1/18/2012	Wednesday	5:00 PM	5:14 PM	14		
To FMC Libertyville	1/18/2012	Wednesday	5:15 PM	5:32 PM	17	13.7	
3 - Fresenius Round Lake (401 N. Nippersink Avenue; Round Lake, Illinois)							
To FMC Round Lake	1/18/2012	Wednesday	10:24 AM	10:39 AM	15		
To FMC Libertyville	1/18/2012	Wednesday	10:39 AM	10:55 AM	16		
To FMC Round Lake	1/18/2012	Wednesday	2:38 PM	2:53 PM	15		
To FMC Libertyville	1/18/2012	Wednesday	2:54 PM	3:10 PM	16		
To FMC Round Lake	1/19/2012	Thursday	4:07 PM	4:28 PM	21		
To FMC Libertyville	1/19/2012	Thursday	4:28 PM	4:43 PM	15	16.3	
4 - Fresenius Gurnee (101 N. Greenleaf Avenue; Gurnee, Illinois)							
To FMC Gurnee	1/18/2012	Wednesday	10:54 AM	11:09 AM	17		
To FMC Libertyville	1/18/2012	Wednesday	12:53 PM	1:09 PM	16		
To FMC Gurnee	1/23/2012	Monday	1:01 PM	1:18 PM	17		
To FMC Libertyville	1/23/2012	Monday	1:20 PM	1:37 PM	17		
To FMC Gurnee	1/18/2012	Wednesday	4:23 PM	4:39 PM	17		
To FMC Libertyville	1/18/2012	Wednesday	4:56 PM	5:26 PM	30	19.0	
5 - Fresenius Lake Bluff (101 Waukegan Road; Lake Bluff, Illinois)							
To FMC Lake Bluff	1/18/2012	Wednesday	12:11 PM	12:28 PM	17		
To FMC Libertyville	1/18/2012	Wednesday	12:37 PM	12:53 PM	16		
To FMC Lake Bluff	1/18/2012	Wednesday	1:49 PM	2:07 PM	18		
To FMC Libertyville	1/18/2012	Wednesday	2:08 PM	2:24 PM	16		
To FMC Lake Bluff	1/18/2012	Wednesday	5:40 PM	5:59 PM	19		
To FMC Libertyville	1/18/2012	Wednesday	6:01 PM	6:23 PM	22	18.0	
6 - DaVita Waukegan (1616 Grand Avenue; Waukegan, Illinois)							
To DaVita Waukegan	1/18/2012	Wednesday	10:56 AM	11:18 AM	22		
To FMC Libertyville	1/18/2012	Wednesday	11:18 AM	11:39 AM	21		
To DaVita Waukegan	1/18/2012	Wednesday	12:56 PM	1:20 PM	24		
To FMC Libertyville	1/18/2012	Wednesday	1:21 PM	1:42 PM	21		
To DaVita Waukegan	1/18/2012	Wednesday	3:30 PM	3:58 PM	28		
To FMC Libertyville	1/18/2012	Wednesday	3:58 PM	4:24 PM	26	23.7	
7 - DaVita Buffalo Grove (1291 W. Dundee Road; Buffalo Grove, Illinois)							
To DaVita Buffalo Grove	1/18/2012	Wednesday	1:09 PM	1:35 PM	24		
To FMC Libertyville	1/18/2012	Wednesday	10:24 AM	10:51 AM	27		
To DaVita Buffalo Grove	1/18/2012	Wednesday	5:26 PM	5:57 PM	31		
To FMC Libertyville	1/23/2012	Monday	5:40 PM	6:21 PM	41		
To DaVita Buffalo Grove	1/23/2012	Monday	1:40 PM	2:11 PM	31		
To FMC Libertyville	1/23/2012	Monday	2:13 PM	2:44 PM	31	30.8	
8 - FMC Waukegan Harbor (110 N. West Street; Waukegan Harbor, Illinois)							
To FMC Waukegan Harbor	1/18/2012	Wednesday	Noon	12:27 PM	27		
To FMC Libertyville	1/18/2012	Wednesday	11:33 AM	11:59 AM	26		
To FMC Waukegan Harbor	1/18/2012	Wednesday	2:27 PM	2:58 PM	31		
To FMC Libertyville	1/23/2012	Monday	12:28 PM	12:59 PM	31		
To FMC Waukegan Harbor	1/23/2012	Monday	4:00 PM	4:33 PM	33		
To FMC Libertyville	1/23/2012	Monday	4:34 PM	5:07 PM	33	30.2	
9 - DaVita Lake Villa (37809 SR 59; Lake Villa, Illinois)							
To DaVita Lake Villa	1/18/2012	Wednesday	12:06 PM	12:31 PM	25		
To FMC Libertyville	1/18/2012	Wednesday	12:32 PM	12:55 PM	23		
To DaVita Lake Villa	1/18/2012	Wednesday	1:47 PM	2:12 PM	26		
To FMC Libertyville	1/18/2012	Wednesday	2:12 PM	2:37 PM	25		
To DaVita Lake Villa	1/19/2012	Thursday	4:43 PM	5:16 PM	33		
To FMC Libertyville	1/19/2012	Thursday	3:41 PM	4:07 PM	26	26.3	
10 - Fresenius Palatine (691 E. Dundee Road; Palatine, Illinois)							
To FMC Palatine	1/19/2012	Thursday	12:55 PM	1:24 PM	29		
To FMC Libertyville	1/19/2012	Thursday	1:26 PM	1:58 PM	32		
To FMC Palatine	1/19/2012	Thursday	2:01 PM	2:30 PM	29		
To FMC Libertyville	1/19/2012	Thursday	2:34 PM	3:06 PM	32		
To FMC Palatine	1/19/2012	Thursday	5:03 PM	5:38 PM	35		
To FMC Libertyville	1/19/2012	Thursday	5:40 PM	6:19 PM	39	32.7	

The adjusted rate of prevalent cases of end-stage renal disease rose 2.1 percent in 2009 — up slightly from the 1.9 percent growth in 2008 — to 1,738 per million population. This rate is nearly 23 percent higher than that seen in 2000. The annual rate of increase has remained between 1.9 and 2.4 percent since 2003. » Figure I.9; see page 379 for analytical methods. December 31 point prevalent ESRD patients. Adj: age/gender/race; ref: 2005 ESRD patients.

In 2009, the rate of prevalent ESRD was 1,738 per million population. Geographic patterns generally follow those found in the incident population, with rates in the upper quintile averaging 2,278. (Rates are not adjusted for ethnicity.) » Figure I.10; see page 379 for analytical methods. December 31 point prevalent patients. Adj: age/gender/race; ref: 2005 ESRD patients.



I.b Patient demographics & adjusted rates, by ESRD network: December 31 point prevalent dialysis patients, 2009

	All pts	% of total	Rate/ million	Mean age	% DM	% White	% Af Am	% N Am	% Asian	% Hisp.
1	12,821	3.2	832	64.3	39.4	74.4	21.4	0.3	3.2	9.3
2	25,688	6.4	1,233	62.5	40.7	51.2	40.6	0.5	5.6	15.0
3	16,285	4.1	1,255	62.7	47.1	59.9	34.1	0.1	3.4	36.0
4	17,334	4.4	1,227	63.0	41.2	62.4	35.3	0.1	1.7	4.1
5	22,953	5.8	1,344	60.8	39.2	35.9	60.3	0.1	2.7	3.4
6	38,066	9.5	1,499	58.9	41.1	30.5	67.2	0.6	1.1	2.6
7	23,149	5.8	1,172	61.4	40.6	55.2	41.7	0.3	2.0	15.5
8	22,464	5.6	1,535	59.2	40.8	37.5	61.3	0.5	0.6	0.8
9	28,205	7.1	1,202	62.1	43.7	64.5	34.4	0.1	0.7	2.0
10	16,678	4.2	1,233	61.7	39.1	54.2	41.7	0.2	3.4	13.1
11	24,219	6.1	1,018	62.9	41.4	62.2	31.8	3.2	2.5	4.1
12	14,410	3.6	1,012	61.8	41.1	67.2	29.8	1.0	1.6	4.7
13	15,848	4.0	1,373	59.2	42.2	42.1	51.8	4.8	1.0	2.7
14	36,489	9.2	1,397	59.2	53.1	66.9	30.1	0.3	2.0	44.0
15	18,521	4.6	891	60.8	52.6	71.0	11.3	13.3	4.1	29.2
16	10,897	2.7	749	61.1	42.3	77.5	9.2	4.3	8.9	10.3
17	21,413	5.4	1,284	61.3	49.1	50.3	15.6	0.8	31.7	22.7
18	33,414	8.4	1,356	60.8	47.7	70.1	15.9	0.5	13.0	46.3
Unk	*	*	*	*	*	*	*	*	*	*
All	398,861	100.0	1,210	61.1	43.9	56.0	36.9	1.4	4.9	16.3

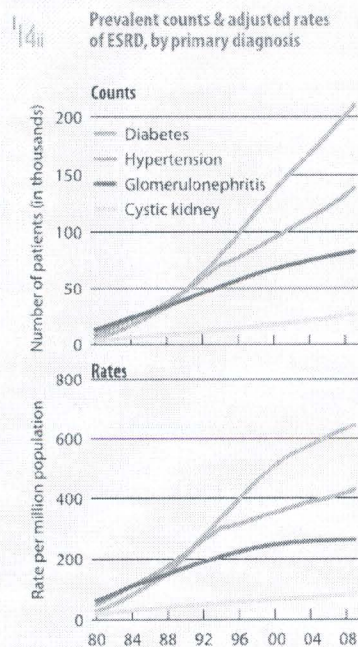
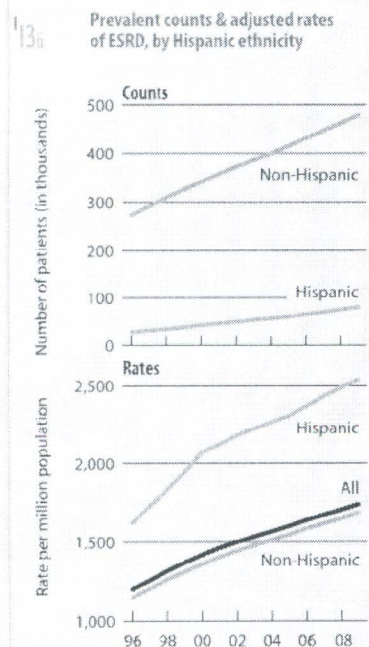
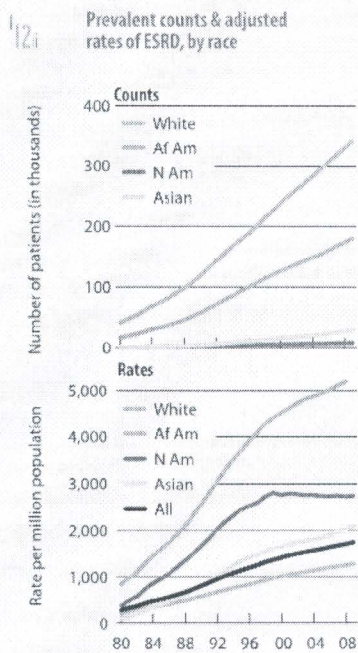
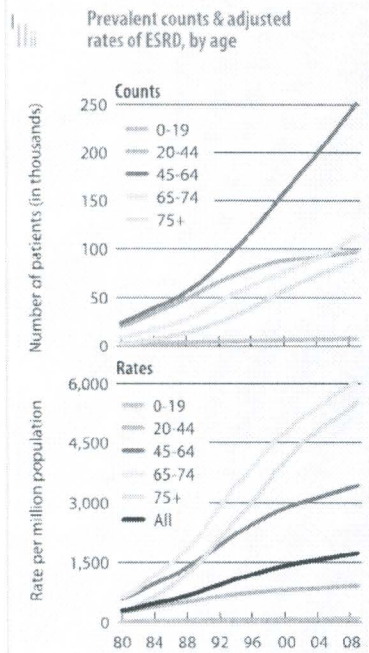
I.c Patient demographics & adjusted rates, by ESRD network: December 31 point prevalent transplant patients, 2009

	All pts	% of total	Rate/ million	Mean age	% DM	% White	% Af Am	% N Am	% Asian	% Hisp.
1	8,329	4.8	537.3	52.4	20.1	81.6	11.9	0.3	5.0	8.2
2	11,311	6.6	540.4	51.9	19.8	65.8	22.8	0.8	7.8	17.8
3	4,950	2.9	439.3	51.8	22.8	69.4	21.8	0.3	5.4	30.7
4	9,997	5.8	694.1	52.7	22.3	72.3	20.6	0.4	4.8	3.3
5	10,737	6.2	628.7	52.1	22.1	55.5	36.5	0.6	5.5	4.6
6	10,268	6.0	413.9	50.8	23.2	57.3	38.6	0.9	2.7	2.5
7	8,868	5.1	451.4	53.0	21.8	70.4	23.7	0.6	4.1	17.9
8	7,851	4.6	542.6	50.6	21.0	63.7	33.7	0.4	1.8	1.1
9	12,072	7.0	516.7	51.7	25.1	79.6	16.9	0.2	2.5	1.7
10	7,498	4.4	538.2	51.0	23.5	65.5	25.7	0.6	5.6	14.6
11	18,482	10.7	786.1	52.3	27.8	81.5	12.6	1.8	3.5	3.3
12	8,036	4.7	568.1	51.8	23.3	81.8	14.3	0.8	2.7	5.0
13	5,112	3.0	446.4	50.9	23.9	61.9	32.5	3.1	2.0	2.7
14	11,953	6.9	451.1	50.3	25.5	76.9	16.9	0.5	4.4	37.6
15	9,004	5.2	442.5	51.5	28.2	83.7	5.2	6.0	4.7	21.3
16	6,331	3.7	443.0	52.4	24.1	83.1	5.8	2.5	8.4	7.1
17	9,069	5.3	557.0	51.5	21.3	63.7	8.8	1.0	24.0	21.0
18	12,321	7.1	501.6	50.1	19.6	73.0	10.8	0.6	14.5	38.5
Unk	364	0.2	43.5	0.0	10.2	1.9	4.7	42.0	0.0	0.0
All	172,553	100.0	528.2	51.6	23.2	71.9	19.4	1.1	6.2	13.3

In 2009, the overall rate for December 31 point prevalent dialysis patients was 1,210 per million population. The percentage of prevalent patients with ESRD caused by diabetes ranges from 39 in Networks 1, 5, and 10 to 53 in Networks 14 and 15. » Table I.b; see page 379 for analytical methods. December 31 point prevalent dialysis patients. *Values for cells with ten or fewer patients are suppressed. Adj: age/gender/race; ref: 2005 patients.

For December 31, 2009 point prevalent transplant patients, the adjusted rate per million population is lowest in Network 6, at 414, and greatest in Network 11, at 786. As in the incident population, racial discrepancies persist. In Network 6, for example, African Americans account for 67 percent of prevalent dialysis patients, but only 39 percent of the prevalent transplant population. » Table I.c; see page 379 for analytical methods. December 31 point prevalent transplant patients. Adj: age/gender/race; ref: 2005 patients.

PREVALENT COUNTS AND ADJUSTED RATES



Reaching 6,066 per million population in 2009, the adjusted rate of prevalent ESRD for patients age 65–74 has increased 28 percent since 2000, while the rate among those age 75 and older has grown 37 percent, to 5,545. Among those age 20–44 and 45–64, in contrast, growth has been 13 and 20 percent, respectively.

By race, rates of prevalent ESRD remain greatest in the African American and Native American populations, at 5,284 and 2,735 per million population in 2009, compared to 1,279 and 2,101 among whites and Asians. The rate among Hispanics reached 2,538 in 2009, 1.5 times greater than that in the non-Hispanic population.

Rates of ESRD due to diabetes and hypertension rose 2.2 and 2.7 percent, respectively, in 2009, to 647 and 429 per million population. ESRD caused by cystic kidney disease rose 2.4 percent, to 83, and ESRD due to glomerulonephritis remained stable, at 263. >> Figures 1.11–14; see page 379 for analytical methods. December 31 point prevalent ESRD patients. Adj: gender/race (1.11); age/gender (1.12–13); age/gender/race (1.14); ref: 2005 ESRD patients.

In 2009, 104,252 new patients began ESRD therapy on hemodialysis, 6,966 were placed on peritoneal dialysis, and 2,500 received a preemptive transplant (these data exclude patients with missing demographic information). The rate per million population reached 325 for hemodialysis, 21.9 for peritoneal dialysis, and 7.9 for transplant.

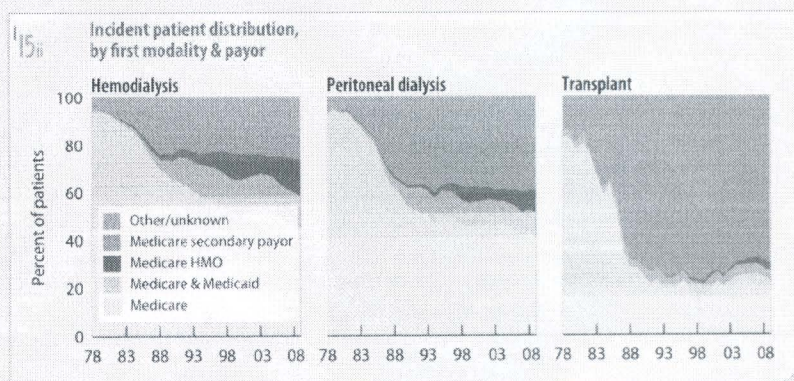
Dramatic differences by race persist, with the rate for African American patients initiating on hemodialysis at 928 per million population — 3.7 times greater than the rate of 251 among whites. The rate for patients who receive a preemptive transplant, in contrast, is 32 among Asians, compared to 6–7 among whites and African Americans and 22 among Native Americans.

Past studies have suggested high mortality and significant movement between modalities in the first 90 days after ESRD initiation. The total number of patients with a known modality fell 12 percent between initiation and day 90. The hemodialysis population at day 90 was 14 percent smaller than at initiation; the peritoneal dialysis and transplant populations, in contrast, gained 1.4 and 21 percent, respectively.

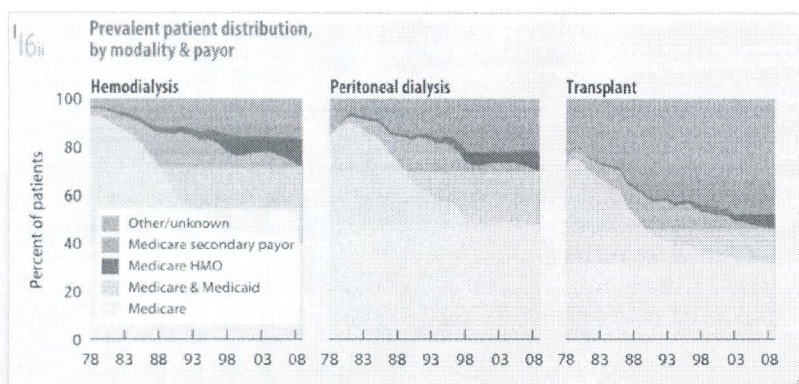
Between initiation and day 90, the rate per million population for hemodialysis fell from 325 to 280, while the rate for transplant rose from 7.9 to 9.5, and that for peritoneal dialysis remained relatively steady, rising from 21.9 to 22.2. >> Table I.d; see page 379 for analytical methods. *Incident ESRD patients, 2009; unknowns dropped. Ref. 2005 patients.*

	At initiation Number of patients			Rate per million population			At day 90 Number of patients			Rate per million population		
	HD	PD	Tx	HD	PD	Tx	HD	PD	Tx	HD	PD	Tx
0-19	684	402	214	8.0	4.8	2.5	583	392	262	6.8	4.7	3.1
20-44	11,958	1,251	646	113.1	11.9	5.9	10,745	1,306	782	101.5	12.4	7.3
45-64	39,337	2,987	1,238	552.4	40.6	16.1	35,045	3,012	1,493	493.1	40.9	19.5
65-74	24,688	1,377	360	1,318.5	69.6	17.2	20,957	1,426	440	1,123.1	72.2	21.1
75+	27,585	949	42	1,704.8	53.9	2.1	22,422	929	44	1,381.2	52.2	2.1
Male	59,081	3,884	1,462	415.1	26.3	9.5	50,535	3,988	1,781	353.4	26.9	11.5
Female	45,171	3,082	1,038	256.6	18.4	6.4	39,217	3,077	1,240	222.8	18.4	7.7
White	68,173	5,043	1,722	251.0	19.1	6.6	56,912	5,098	2,182	209.8	19.3	8.4
African American	30,418	1,462	209	928.3	41.2	5.7	27,680	1,469	263	838.0	41.1	7.2
Native American	1,255	73	71	473.8	25.4	21.7	1,129	94	69	425.9	32.5	21.0
Asian	4,406	388	498	341.2	27.8	32.4	4,031	404	507	309.9	28.9	33.1
Hispanic	13,704	822	227	470.7	23.7	5.8	12,475	849	287	426.0	24.3	7.3
Non-Hispanic	90,548	6,144	2,273	314.1	21.9	8.3	77,277	6,216	2,734	268.5	22.2	10.0
Diabetes	46,500	2,791	453	143.9	8.7	1.4	41,911	2,833	603	129.6	8.8	1.9
Hypertension	30,338	1,662	345	94.7	5.2	1.1	26,211	1,684	412	81.9	5.3	1.3
Glomerulonephritis	6,107	901	476	19.3	2.9	1.5	5,480	925	575	17.3	3.0	1.8
Cystic kidney	1,760	448	413	5.6	1.4	1.3	1,666	403	488	5.3	1.3	1.5
Other urologic	1,397	93	61	4.4	0.3	0.2	1,263	97	71	4.0	0.3	0.2
Other cause	13,322	803	494	42.0	2.6	1.6	9,473	839	604	29.9	2.7	1.9
Unknown/missing	4,828	268	258	15.2	0.9	0.8	3,748	284	268	11.8	0.9	0.8
All	104,252	6,966	2,500	325.0	21.9	7.9	89,752	7,065	3,021	279.7	22.2	9.5

Forty-five percent of new hemodialysis patients are covered solely by Medicare, 13.5 percent have dual Medicare/Medicaid coverage, and 15.3 percent are covered by a Medicare HMO provider. Medicare covers 41 and 22 percent of new peritoneal dialysis and transplant patients, while 9.8 and 4.2 percent are dually-enrolled, and 9.8 and 3.5 percent have HMO coverage. Coverage by non-Medicare insurers has increased for hemodialysis patients from 5.4 percent in 1978 to nearly 17 percent in 2009. >> Figure I.f5; see page 379 for analytical methods. *Incident ESRD patients.*



	Number of patients			Rate per million population		
	HD	PD	Tx	HD	PD	Tx
0-19	1,264	847	5,160	14.4	10.0	61.2
20-44	48,443	5,734	42,618	459.2	54.6	407.8
45-64	151,005	12,073	87,320	2,123.7	161.8	1,141.0
65-74	82,737	5,029	26,199	4,499.2	252.3	1,308.3
75+	79,210	3,332	6,292	5,013.8	188.4	339.9
Male	200,829	14,242	99,643	1,388.6	95.9	652.2
Female	161,830	12,773	67,946	912.7	76.2	416.1
White	200,779	17,912	122,398	739.2	67.6	469.5
African American	139,320	6,995	33,131	4,166.0	191.9	918.3
Native American	5,363	345	1,860	1,991.3	119.0	620.6
Asian	17,197	1,763	10,200	1,296.6	122.8	676.6
Hispanic	55,360	3,458	20,797	1,864.6	98.4	572.4
Non-Hispanic	307,299	23,557	146,792	1,069.0	83.9	529.3
Diabetes	161,671	9,127	39,450	494.9	28.1	123.1
Hypertension	104,734	6,809	26,771	324.3	21.3	83.1
Glomerulonephritis	34,374	4,642	43,694	108.4	14.8	138.9
Cystic kidney	8,999	1,421	16,389	28.1	4.5	50.6
Other urologic	6,494	567	5,733	20.4	1.8	18.5
Other cause	32,754	3,353	25,122	103.3	10.7	80.8
Unknown/missing	13,633	1,096	10,430	42.6	3.5	33.1
All	362,659	27,015	167,589	1,121.8	84.7	528.2



On December 31, 2009, more than 362,000 ESRD patients were receiving hemodialysis therapy, 27,015 were being treated with peritoneal dialysis, and 167,589 had a functioning graft. Rates of ESRD in the prevalent population continue to be highest among African Americans, at 4,166 per million population for hemodialysis, 192 for peritoneal dialysis, and 918 for transplant. Rates for peritoneal dialysis and transplant are similar in the Native American and Asian populations; at 1,992, however, the rate of Native Americans receiving hemodialysis is 54 percent greater than that found in the Asian population and more than double that found in whites. » Table I.e; see page 379 for analytical methods. December 31 point prevalent ESRD patients, 2009; unknowns dropped. Ref: 2005 patients.

Nine in ten prevalent hemodialysis patients had some type of Medicare coverage in 2009, with 40 percent covered solely by Medicare, and 32 percent under Medicare/Medicaid. In the transplant population, in contrast, just 32 percent are covered solely by Medicare. Transplant patients younger than 65 and not disabled lose their entitlement after three years with a functioning graft. Coverage by non-Medicare insurers continues to increase in the dialysis population, in 2009 reaching 10.8 and 10.2 percent for hemodialysis and peritoneal dialysis patients, respectively. » Figure I.16; see page 379 for analytical methods. December 31 point prevalent ESRD patients.



DP-1

Profile of General Demographic Characteristics: 2000

Census 2000 Summary File 1 (SF 1) 100-Percent Data

NOTE: For information on confidentiality protection, nonsampling error, definitions, and count corrections see <http://factfinder.census.gov/home/en/datanotes/expsf1u.htm>.

Subject	Kane County, Illinois		Lake County, Illinois		McHenry County, Illinois	
	Number	Percent	Number	Percent	Number	Percent
Total population	404,119	100.0	644,356	100.0	260,077	100.0
SEX AND AGE						
Male	203,245	50.3	324,034	50.3	130,474	50.2
Female	200,874	49.7	320,322	49.7	129,603	49.8
Under 5 years	35,249	8.7	52,978	8.2	21,110	8.1
5 to 9 years	35,117	8.7	55,785	8.7	23,044	8.9
10 to 14 years	32,490	8.0	51,861	8.0	22,205	8.5
15 to 19 years	30,478	7.5	48,500	7.5	18,130	7.0
20 to 24 years	25,571	6.3	37,733	5.9	12,399	4.8
25 to 34 years	60,815	15.0	87,983	13.7	36,748	14.1
35 to 44 years	68,064	16.8	115,530	17.9	50,255	19.3
45 to 54 years	53,180	13.2	89,642	13.9	35,866	13.8
55 to 59 years	17,023	4.2	28,964	4.5	11,680	4.5
60 to 64 years	12,151	3.0	20,391	3.2	7,727	3.0
65 to 74 years	17,871	4.4	30,625	4.8	11,351	4.4
75 to 84 years	11,738	2.9	18,323	2.8	7,115	2.7
85 years and over	4,372	1.1	6,041	0.9	2,447	0.9
Median age (years)	32.2	(X)	33.8	(X)	34.2	(X)
18 years and over	281,824	69.7	454,992	70.6	181,581	69.8
Male	140,078	34.7	226,747	35.2	89,870	34.6
Female	141,746	35.1	228,245	35.4	91,711	35.3
21 years and over	265,587	65.7	426,691	66.2	173,032	66.5
62 years and over	40,814	10.1	66,538	10.3	25,356	9.7
65 years and over	33,981	8.4	54,989	8.5	20,913	8.0
Male	13,782	3.4	23,235	3.6	8,697	3.3
Female	20,199	5.0	31,754	4.9	12,216	4.7
RACE						
One race	395,184	97.8	631,427	98.0	257,256	98.9
White	320,340	79.3	516,189	80.1	244,240	93.9
Black or African American	23,279	5.8	44,741	6.9	1,523	0.6
American Indian and Alaska Native	1,255	0.3	1,801	0.3	445	0.2
Asian	7,296	1.8	25,105	3.9	3,782	1.5
Asian Indian	1,615	0.4	5,476	0.8	1,136	0.4
Chinese	789	0.2	4,854	0.8	585	0.2
Filipino	1,305	0.3	7,036	1.1	946	0.4
Japanese	266	0.1	1,493	0.2	194	0.1
Korean	534	0.1	4,089	0.6	447	0.2
Vietnamese	462	0.1	600	0.1	114	0.0
Other Asian [1]	2,325	0.6	1,557	0.2	360	0.1
Native Hawaiian and Other Pacific Islander	144	0.0	308	0.0	55	0.0
Native Hawaiian	23	0.0	64	0.0	19	0.0
Guamanian or Chamorro	33	0.0	63	0.0	5	0.0
Samoan	19	0.0	50	0.0	20	0.0
Other Pacific Islander [2]	69	0.0	131	0.0	11	0.0

Subject	Kane County, Illinois		Lake County, Illinois		McHenry County, Illinois	
	Number	Percent	Number	Percent	Number	Percent
Some other race	42,870	10.6	43,283	6.7	7,211	2.8
Two or more races	8,935	2.2	12,929	2.0	2,821	1.1
Race alone or in combination with one or more other races [3]						
White	328,153	81.2	527,112	81.8	246,837	94.9
Black or African American	25,503	6.3	48,015	7.5	2,040	0.8
American Indian and Alaska Native	2,480	0.6	4,108	0.6	1,119	0.4
Asian	8,745	2.2	28,615	4.4	4,550	1.7
Native Hawaiian and Other Pacific Islander	332	0.1	848	0.1	145	0.1
Some other race	48,193	11.9	49,275	7.6	8,348	3.2
HISPANIC OR LATINO AND RACE						
Total population	404,119	100.0	644,356	100.0	260,077	100.0
Hispanic or Latino (of any race)	95,924	23.7	92,716	14.4	19,602	7.5
Mexican	80,870	20.0	71,153	11.0	15,881	6.1
Puerto Rican	5,630	1.4	7,066	1.1	1,009	0.4
Cuban	435	0.1	831	0.1	283	0.1
Other Hispanic or Latino	8,989	2.2	13,666	2.1	2,429	0.9
Not Hispanic or Latino	308,195	76.3	551,640	85.6	240,475	92.5
White alone	273,390	67.7	472,968	73.4	233,026	89.6
RELATIONSHIP						
Total population	404,119	100.0	644,356	100.0	260,077	100.0
In households	397,616	98.4	623,378	96.7	258,558	99.4
Householder	133,901	33.1	216,297	33.6	89,403	34.4
Spouse	81,968	20.3	136,686	21.2	59,453	22.9
Child	137,736	34.1	214,047	33.2	90,822	34.9
Own child under 18 years	110,418	27.3	176,304	27.4	74,569	28.7
Other relatives	26,463	6.5	31,623	4.9	9,546	3.7
Under 18 years	8,830	2.2	9,952	1.5	2,857	1.1
Nonrelatives	17,548	4.3	24,725	3.8	9,334	3.6
Unmarried partner	6,326	1.6	9,064	1.4	3,780	1.5
In group quarters	6,503	1.6	20,978	3.3	1,519	0.6
Institutionalized population	4,631	1.1	5,642	0.9	1,106	0.4
Noninstitutionalized population	1,872	0.5	15,336	2.4	413	0.2
HOUSEHOLDS BY TYPE						
Total households	133,901	100.0	216,297	100.0	89,403	100.0
Family households (families)	101,454	75.8	163,978	75.8	69,303	77.5
With own children under 18 years	55,722	41.6	91,028	42.1	38,311	42.9
Married-couple family	81,968	61.2	136,686	63.2	59,453	66.5
With own children under 18 years	44,595	33.3	75,001	34.7	32,683	36.6
Female householder, no husband present	13,406	10.0	19,861	9.2	6,760	7.6
With own children under 18 years	8,188	6.1	12,365	5.7	4,046	4.5
Nonfamily households	32,447	24.2	52,319	24.2	20,100	22.5
Householder living alone	26,295	19.6	42,662	19.7	16,100	18.0
Householder 65 years and over	8,915	6.7	13,472	6.2	5,432	6.1
Households with individuals under 18 years	59,783	44.6	96,035	44.4	40,147	44.9
Households with individuals 65 years and over	23,894	17.8	38,237	17.7	15,025	16.8
Average household size	2.97	(X)	2.88	(X)	2.89	(X)
Average family size	3.43	(X)	3.33	(X)	3.31	(X)
HOUSING OCCUPANCY						
Total housing units	138,998	100.0	225,919	100.0	92,908	100.0
Occupied housing units	133,901	96.3	216,297	95.7	89,403	96.2
Vacant housing units	5,097	3.7	9,622	4.3	3,505	3.8
For seasonal, recreational, or occasional use	402	0.3	2,423	1.1	898	1.0
Homeowner vacancy rate (percent)	1.2	(X)	1.1	(X)	1.2	(X)
Rental vacancy rate (percent)	5.2	(X)	5.0	(X)	4.0	(X)
HOUSING TENURE						
Occupied housing units	133,901	100.0	216,297	100.0	89,403	100.0
Owner-occupied housing units	101,739	76.0	168,301	77.8	74,391	83.2
Renter-occupied housing units	32,162	24.0	47,996	22.2	15,012	16.8
Average household size of owner-occupied unit	3.08	(X)	2.97	(X)	2.98	(X)



DP-1

Profile of General Population and Housing Characteristics: 2010

2010 Demographic Profile Data

NOTE: For more information on confidentiality protection, nonsampling error, and definitions, see <http://www.census.gov/prod/cen2010/doc/dpsf.pdf>.

Geography: Kane County, Illinois

Subject	Number	Percent
SEX AND AGE		
Total population	515,269	100.0
Under 5 years	39,870	7.7
5 to 9 years	42,904	8.3
10 to 14 years	41,701	8.1
15 to 19 years	38,272	7.4
20 to 24 years	29,637	5.8
25 to 29 years	33,359	6.5
30 to 34 years	35,545	6.9
35 to 39 years	37,740	7.3
40 to 44 years	38,376	7.4
45 to 49 years	38,920	7.6
50 to 54 years	35,326	6.9
55 to 59 years	29,802	5.8
60 to 64 years	24,127	4.7
65 to 69 years	16,625	3.2
70 to 74 years	11,483	2.2
75 to 79 years	8,661	1.7
80 to 84 years	6,405	1.2
85 years and over	6,516	1.3
Median age (years)	34.5	(X)
16 years and over	382,533	74.2
18 years and over	366,079	71.0
21 years and over	346,643	67.3
62 years and over	63,396	12.3
65 years and over	49,690	9.6
Male population	256,815	49.8
Under 5 years	20,265	3.9
5 to 9 years	22,052	4.3
10 to 14 years	21,355	4.1
15 to 19 years	19,862	3.9
20 to 24 years	15,353	3.0
25 to 29 years	16,991	3.3
30 to 34 years	17,752	3.4
35 to 39 years	18,753	3.6
40 to 44 years	19,367	3.8
45 to 49 years	19,424	3.8
50 to 54 years	17,785	3.5
55 to 59 years	14,605	2.8
60 to 64 years	11,765	2.3
65 to 69 years	7,777	1.5
70 to 74 years	5,370	1.0
75 to 79 years	3,725	0.7
80 to 84 years	2,571	0.5
85 years and over	2,043	0.4

Subject	Number	Percent
Median age (years)	33.5	(X)
16 years and over	188,848	36.7
18 years and over	180,399	35.0
21 years and over	170,174	33.0
62 years and over	28,187	5.5
65 years and over	21,486	4.2
Female population	258,454	50.2
Under 5 years	19,605	3.8
5 to 9 years	20,852	4.0
10 to 14 years	20,346	3.9
15 to 19 years	18,410	3.6
20 to 24 years	14,284	2.8
25 to 29 years	16,368	3.2
30 to 34 years	17,793	3.5
35 to 39 years	18,987	3.7
40 to 44 years	19,009	3.7
45 to 49 years	19,496	3.8
50 to 54 years	17,541	3.4
55 to 59 years	15,197	2.9
60 to 64 years	12,362	2.4
65 to 69 years	8,848	1.7
70 to 74 years	6,113	1.2
75 to 79 years	4,936	1.0
80 to 84 years	3,834	0.7
85 years and over	4,473	0.9
Median age (years)	35.4	(X)
16 years and over	193,685	37.6
18 years and over	185,680	36.0
21 years and over	176,469	34.2
62 years and over	35,209	6.8
65 years and over	28,204	5.5
RACE		
Total population	515,269	100.0
One Race	501,763	97.4
White	384,548	74.6
Black or African American	29,422	5.7
American Indian and Alaska Native	2,887	0.6
Asian	17,895	3.5
Asian Indian	4,695	0.9
Chinese	1,714	0.3
Filipino	4,988	1.0
Japanese	358	0.1
Korean	1,095	0.2
Vietnamese	883	0.2
Other Asian [1]	4,162	0.8
Native Hawaiian and Other Pacific Islander	193	0.0
Native Hawaiian	58	0.0
Guamanian or Chamorro	35	0.0
Samoan	12	0.0
Other Pacific Islander [2]	88	0.0
Some Other Race	66,818	13.0
Two or More Races	13,506	2.6
White; American Indian and Alaska Native [3]	1,352	0.3
White; Asian [3]	2,272	0.4
White; Black or African American [3]	2,910	0.6
White; Some Other Race [3]	4,591	0.9
Race alone or in combination with one or more other races: [4]		
White	396,290	76.9
Black or African American	33,594	6.5
American Indian and Alaska Native	5,055	1.0

Subject	Number	Percent
Asian	21,080	4.1
Native Hawaiian and Other Pacific Islander	481	0.1
Some Other Race	72,900	14.1
HISPANIC OR LATINO		
Total population	515,269	100.0
Hispanic or Latino (of any race)	158,390	30.7
Mexican	139,009	27.0
Puerto Rican	8,540	1.7
Cuban	843	0.2
Other Hispanic or Latino [5]	9,998	1.9
Not Hispanic or Latino	356,879	69.3
HISPANIC OR LATINO AND RACE		
Total population	515,269	100.0
Hispanic or Latino	158,390	30.7
White alone	80,497	15.6
Black or African American alone	1,603	0.3
American Indian and Alaska Native alone	2,296	0.4
Asian alone	390	0.1
Native Hawaiian and Other Pacific Islander alone	63	0.0
Some Other Race alone	66,296	12.9
Two or More Races	7,245	1.4
Not Hispanic or Latino	356,879	69.3
White alone	304,051	59.0
Black or African American alone	27,819	5.4
American Indian and Alaska Native alone	591	0.1
Asian alone	17,505	3.4
Native Hawaiian and Other Pacific Islander alone	130	0.0
Some Other Race alone	522	0.1
Two or More Races	6,261	1.2
RELATIONSHIP		
Total population	515,269	100.0
In households	508,482	98.7
Householder	170,479	33.1
Spouse [6]	101,008	19.6
Child	174,763	33.9
Own child under 18 years	131,989	25.6
Other relatives	38,075	7.4
Under 18 years	13,761	2.7
65 years and over	4,750	0.9
Nonrelatives	24,157	4.7
Under 18 years	2,209	0.4
65 years and over	834	0.2
Unmarried partner	10,546	2.0
In group quarters	6,787	1.3
Institutionalized population	3,378	0.7
Male	1,821	0.4
Female	1,557	0.3
Noninstitutionalized population	3,409	0.7
Male	1,765	0.3
Female	1,644	0.3
HOUSEHOLDS BY TYPE		
Total households	170,479	100.0
Family households (families) [7]	128,323	75.3
With own children under 18 years	66,146	38.8
Husband-wife family	101,008	59.2
With own children under 18 years	51,061	30.0
Male householder, no wife present	8,615	5.1
With own children under 18 years	4,187	2.5
Female householder, no husband present	18,700	11.0
With own children under 18 years	10,898	6.4



DP-1

Profile of General Population and Housing Characteristics: 2010

2010 Demographic Profile Data

NOTE: For more information on confidentiality protection, nonsampling error, and definitions, see <http://www.census.gov/prod/cen2010/doc/dpsf.pdf>.

Geography: Lake County, Illinois

Subject	Number	Percent
SEX AND AGE		
Total population	703,462	100.0
Under 5 years	47,115	6.7
5 to 9 years	53,615	7.6
10 to 14 years	56,719	8.1
15 to 19 years	56,143	8.0
20 to 24 years	42,235	6.0
25 to 29 years	39,824	5.7
30 to 34 years	41,236	5.9
35 to 39 years	47,000	6.7
40 to 44 years	52,747	7.5
45 to 49 years	58,539	8.3
50 to 54 years	55,444	7.9
55 to 59 years	45,041	6.4
60 to 64 years	34,711	4.9
65 to 69 years	23,903	3.4
70 to 74 years	16,533	2.4
75 to 79 years	12,420	1.8
80 to 84 years	10,342	1.5
85 years and over	9,895	1.4
Median age (years)	36.7	(X)
16 years and over	534,252	75.9
18 years and over	510,790	72.6
21 years and over	480,948	68.4
62 years and over	93,016	13.2
65 years and over	73,093	10.4
Male population	351,119	49.9
Under 5 years	24,011	3.4
5 to 9 years	27,402	3.9
10 to 14 years	29,162	4.1
15 to 19 years	30,215	4.3
20 to 24 years	23,536	3.3
25 to 29 years	20,513	2.9
30 to 34 years	20,264	2.9
35 to 39 years	22,981	3.3
40 to 44 years	25,727	3.7
45 to 49 years	28,581	4.1
50 to 54 years	27,390	3.9
55 to 59 years	22,211	3.2
60 to 64 years	17,121	2.4
65 to 69 years	11,495	1.6
70 to 74 years	7,634	1.1
75 to 79 years	5,396	0.8
80 to 84 years	4,192	0.6
85 years and over	3,288	0.5

Subject	Number	Percent
Median age (years)	35.1	(X)
16 years and over	264,528	37.6
18 years and over	252,358	35.9
21 years and over	235,136	33.4
62 years and over	41,767	5.9
65 years and over	32,005	4.5
Female population	352,343	50.1
Under 5 years	23,104	3.3
5 to 9 years	26,213	3.7
10 to 14 years	27,557	3.9
15 to 19 years	25,928	3.7
20 to 24 years	18,699	2.7
25 to 29 years	19,311	2.7
30 to 34 years	20,972	3.0
35 to 39 years	24,019	3.4
40 to 44 years	27,020	3.8
45 to 49 years	29,958	4.3
50 to 54 years	28,054	4.0
55 to 59 years	22,830	3.2
60 to 64 years	17,590	2.5
65 to 69 years	12,408	1.8
70 to 74 years	8,899	1.3
75 to 79 years	7,024	1.0
80 to 84 years	6,150	0.9
85 years and over	6,607	0.9
Median age (years)	38.1	(X)
16 years and over	269,724	38.3
18 years and over	258,432	36.7
21 years and over	245,812	34.9
62 years and over	51,249	7.3
65 years and over	41,088	5.8
RACE		
Total population	703,462	100.0
One Race	685,176	97.4
White	528,204	75.1
Black or African American	49,033	7.0
American Indian and Alaska Native	3,279	0.5
Asian	44,358	6.3
Asian Indian	12,660	1.8
Chinese	8,045	1.1
Filipino	10,565	1.5
Japanese	1,496	0.2
Korean	7,334	1.0
Vietnamese	857	0.1
Other Asian [1]	3,401	0.5
Native Hawaiian and Other Pacific Islander	294	0.0
Native Hawaiian	58	0.0
Guamanian or Chamorro	92	0.0
Samoan	53	0.0
Other Pacific Islander [2]	91	0.0
Some Other Race	60,008	8.5
Two or More Races	18,286	2.6
White; American Indian and Alaska Native [3]	1,816	0.3
White; Asian [3]	4,521	0.6
White; Black or African American [3]	3,504	0.5
White; Some Other Race [3]	4,594	0.7
Race alone or in combination with one or more other races: [4]		
White	543,803	77.3
Black or African American	54,533	7.8
American Indian and Alaska Native	6,334	0.9

Subject	Number	Percent
Asian	50,622	7.2
Native Hawaiian and Other Pacific Islander	1,056	0.2
Some Other Race	66,528	9.5
HISPANIC OR LATINO		
Total population	703,462	100.0
Hispanic or Latino (of any race)	139,987	19.9
Mexican	111,952	15.9
Puerto Rican	9,510	1.4
Cuban	1,324	0.2
Other Hispanic or Latino [5]	17,201	2.4
Not Hispanic or Latino	563,475	80.1
HISPANIC OR LATINO AND RACE		
Total population	703,462	100.0
Hispanic or Latino	139,987	19.9
White alone	69,503	9.9
Black or African American alone	2,044	0.3
American Indian and Alaska Native alone	2,221	0.3
Asian alone	404	0.1
Native Hawaiian and Other Pacific Islander alone	66	0.0
Some Other Race alone	58,461	8.3
Two or More Races	7,288	1.0
Not Hispanic or Latino	563,475	80.1
White alone	458,701	65.2
Black or African American alone	46,989	6.7
American Indian and Alaska Native alone	1,058	0.2
Asian alone	43,954	6.2
Native Hawaiian and Other Pacific Islander alone	228	0.0
Some Other Race alone	1,547	0.2
Two or More Races	10,998	1.6
RELATIONSHIP		
Total population	703,462	100.0
In households	682,753	97.1
Householder	241,712	34.4
Spouse [6]	144,065	20.5
Child	231,447	32.9
Own child under 18 years	177,124	25.2
Other relatives	38,407	5.5
Under 18 years	12,861	1.8
65 years and over	6,459	0.9
Nonrelatives	27,122	3.9
Under 18 years	2,277	0.3
65 years and over	1,147	0.2
Unmarried partner	12,505	1.8
In group quarters	20,709	2.9
Institutionalized population	4,872	0.7
Male	2,337	0.3
Female	2,535	0.4
Noninstitutionalized population	15,837	2.3
Male	11,559	1.6
Female	4,278	0.6
HOUSEHOLDS BY TYPE		
Total households	241,712	100.0
Family households (families) [7]	179,428	74.2
With own children under 18 years	92,452	38.2
Husband-wife family	144,065	59.6
With own children under 18 years	72,375	29.9
Male householder, no wife present	10,220	4.2
With own children under 18 years	5,157	2.1
Female householder, no husband present	25,143	10.4
With own children under 18 years	14,920	6.2



DP-1

Profile of General Population and Housing Characteristics: 2010

2010 Demographic Profile Data

NOTE: For more information on confidentiality protection, nonsampling error, and definitions, see <http://www.census.gov/prod/cen2010/doc/dpsf.pdf>.Geography: **McHenry County, Illinois**

Subject	Number	Percent
SEX AND AGE		
Total population	308,760	100.0
Under 5 years	19,896	6.4
5 to 9 years	23,408	7.6
10 to 14 years	25,253	8.2
15 to 19 years	23,605	7.6
20 to 24 years	15,468	5.0
25 to 29 years	16,563	5.4
30 to 34 years	18,198	5.9
35 to 39 years	21,582	7.0
40 to 44 years	25,754	8.3
45 to 49 years	27,700	9.0
50 to 54 years	24,919	8.1
55 to 59 years	19,574	6.3
60 to 64 years	15,520	5.0
65 to 69 years	11,307	3.7
70 to 74 years	7,253	2.3
75 to 79 years	5,222	1.7
80 to 84 years	3,958	1.3
85 years and over	3,580	1.2
Median age (years)	38.0	(X)
16 years and over	234,909	76.1
18 years and over	224,585	72.7
21 years and over	213,369	69.1
62 years and over	40,174	13.0
65 years and over	31,320	10.1
Male population	153,936	49.9
Under 5 years	10,152	3.3
5 to 9 years	11,970	3.9
10 to 14 years	12,924	4.2
15 to 19 years	12,220	4.0
20 to 24 years	8,202	2.7
25 to 29 years	8,456	2.7
30 to 34 years	9,070	2.9
35 to 39 years	10,652	3.4
40 to 44 years	12,645	4.1
45 to 49 years	13,855	4.5
50 to 54 years	12,451	4.0
55 to 59 years	9,815	3.2
60 to 64 years	7,622	2.5
65 to 69 years	5,409	1.8
70 to 74 years	3,414	1.1
75 to 79 years	2,342	0.8
80 to 84 years	1,621	0.5
85 years and over	1,116	0.4

Subject	Number	Percent
Median age (years)	37.0	(X)
16 years and over	116,143	37.6
18 years and over	110,886	35.9
21 years and over	104,908	34.0
62 years and over	18,241	5.9
65 years and over	13,902	4.5
Female population	154,824	50.1
Under 5 years	9,744	3.2
5 to 9 years	11,438	3.7
10 to 14 years	12,329	4.0
15 to 19 years	11,385	3.7
20 to 24 years	7,266	2.4
25 to 29 years	8,107	2.6
30 to 34 years	9,128	3.0
35 to 39 years	10,930	3.5
40 to 44 years	13,109	4.2
45 to 49 years	13,845	4.5
50 to 54 years	12,468	4.0
55 to 59 years	9,759	3.2
60 to 64 years	7,898	2.6
65 to 69 years	5,898	1.9
70 to 74 years	3,839	1.2
75 to 79 years	2,880	0.9
80 to 84 years	2,337	0.8
85 years and over	2,464	0.8
Median age (years)	38.8	(X)
16 years and over	118,766	38.5
18 years and over	113,699	36.8
21 years and over	108,461	35.1
62 years and over	21,933	7.1
65 years and over	17,418	5.6
RACE		
Total population	308,760	100.0
One Race	303,560	98.3
White	278,257	90.1
Black or African American	3,283	1.1
American Indian and Alaska Native	939	0.3
Asian	7,807	2.5
Asian Indian	2,517	0.8
Chinese	888	0.3
Filipino	2,215	0.7
Japanese	219	0.1
Korean	674	0.2
Vietnamese	319	0.1
Other Asian [1]	975	0.3
Native Hawaiian and Other Pacific Islander	80	0.0
Native Hawaiian	27	0.0
Guamanian or Chamorro	23	0.0
Samoan	7	0.0
Other Pacific Islander [2]	23	0.0
Some Other Race	13,194	4.3
Two or More Races	5,200	1.7
White; American Indian and Alaska Native [3]	879	0.3
White; Asian [3]	1,375	0.4
White; Black or African American [3]	279	0.0

Subject	Number	Percent
Asian	9,552	3.1
Native Hawaiian and Other Pacific Islander	244	0.1
Some Other Race	14,734	4.8
HISPANIC OR LATINO		
Total population	308,760	100.0
Hispanic or Latino (of any race)	35,249	11.4
Mexican	28,796	9.3
Puerto Rican	2,156	0.7
Cuban	439	0.1
Other Hispanic or Latino [5]	3,858	1.2
Not Hispanic or Latino	273,511	88.6
HISPANIC OR LATINO AND RACE		
Total population	308,760	100.0
Hispanic or Latino	35,249	11.4
White alone	19,673	6.4
Black or African American alone	238	0.1
American Indian and Alaska Native alone	484	0.2
Asian alone	95	0.0
Native Hawaiian and Other Pacific Islander alone	12	0.0
Some Other Race alone	12,984	4.2
Two or More Races	1,763	0.6
Not Hispanic or Latino	273,511	88.6
White alone	258,584	83.7
Black or African American alone	3,045	1.0
American Indian and Alaska Native alone	455	0.1
Asian alone	7,712	2.5
Native Hawaiian and Other Pacific Islander alone	68	0.0
Some Other Race alone	210	0.1
Two or More Races	3,437	1.1
RELATIONSHIP		
Total population	308,760	100.0
In households	307,113	99.5
Householder	109,199	35.4
Spouse [6]	67,988	22.0
Child	103,852	33.6
Own child under 18 years	78,326	25.4
Other relatives	13,714	4.4
Under 18 years	4,719	1.5
65 years and over	2,617	0.8
Nonrelatives	12,360	4.0
Under 18 years	1,082	0.4
65 years and over	449	0.1
Unmarried partner	6,244	2.0
In group quarters	1,647	0.5
Institutionalized population	1,337	0.4
Male	716	0.2
Female	621	0.2
Noninstitutionalized population	310	0.1
Male	155	0.1
Female	155	0.1
HOUSEHOLDS BY TYPE		
Total households	109,199	100.0
Family households (families) [7]	82,288	75.4
With own children under 18 years	41,070	37.6
Husband-wife family	67,988	62.3
With own children under 18 years	33,218	30.4
Male householder, no wife present	4,572	4.2
With own children under 18 years	2,271	2.1
Female householder, no husband present	9,728	8.9
With own children under 18 years	5,581	5.1

Subject	Number	Percent
Nonfamily households [7]	26,911	24.6
Householder living alone	21,620	19.8
Male	9,980	9.1
65 years and over	1,998	1.8
Female	11,640	10.7
65 years and over	5,491	5.0
Households with individuals under 18 years	43,752	40.1
Households with individuals 65 years and over	22,442	20.6
Average household size	2.81	(X)
Average family size [7]	3.25	(X)
HOUSING OCCUPANCY		
Total housing units	116,040	100.0
Occupied housing units	109,199	94.1
Vacant housing units	6,841	5.9
For rent	1,741	1.5
Rented, not occupied	109	0.1
For sale only	1,865	1.6
Sold, not occupied	302	0.3
For seasonal, recreational, or occasional use	1,092	0.9
All other vacants	1,732	1.5
Homeowner vacancy rate (percent) [8]	2.0	(X)
Rental vacancy rate (percent) [9]	8.6	(X)
HOUSING TENURE		
Occupied housing units	109,199	100.0
Owner-occupied housing units	90,722	83.1
Population in owner-occupied housing units	259,669	(X)
Average household size of owner-occupied units	2.86	(X)
Renter-occupied housing units	18,477	16.9
Population in renter-occupied housing units	47,444	(X)
Average household size of renter-occupied units	2.57	(X)

X Not applicable.

[1] Other Asian alone, or two or more Asian categories.

[2] Other Pacific Islander alone, or two or more Native Hawaiian and Other Pacific Islander categories.

[3] One of the four most commonly reported multiple-race combinations nationwide in Census 2000.

[4] In combination with one or more of the other races listed. The six numbers may add to more than the total population, and the six percentages may add to more than 100 percent because individuals may report more than one race.

[5] This category is composed of people whose origins are from the Dominican Republic, Spain, and Spanish-speaking Central or South American countries. It also includes general origin responses such as "Latino" or "Hispanic."

[6] "Spouse" represents spouse of the householder. It does not reflect all spouses in a household. Responses of "same-sex spouse" were edited during processing to "unmarried partner."

[7] "Family households" consist of a householder and one or more other people related to the householder by birth, marriage, or adoption. They do not include same-sex married couples even if the marriage was performed in a state issuing marriage certificates for same-sex couples. Same-sex couple households are included in the family households category if there is at least one additional person related to the householder by birth or adoption. Same-sex couple households with no relatives of the householder present are tabulated in nonfamily households. "Nonfamily households" consist of people living alone and households which do not have any members related to the householder.

[8] The homeowner vacancy rate is the proportion of the homeowner inventory that is vacant "for sale." It is computed by dividing the total number of vacant units "for sale only" by the sum of owner-occupied units, vacant units that are "for sale only," and vacant units that have been sold but not yet occupied; and then multiplying by 100.

[9] The rental vacancy rate is the proportion of the rental inventory that is vacant "for rent." It is computed by dividing the total number of vacant units "for rent" by the sum of the renter-occupied units, vacant units that are "for rent," and vacant units that have been rented but not yet occupied; and then multiplying by 100.

Source: U.S. Census Bureau, 2010 Census.