

MEMO

RECEIVED

SEP 21 2011

**HEALTH FACILITIES &
SERVICES REVIEW BOARD**

Re: Public Hearing
Provena St Mary's Hospital

Date: September 16, 2011

Place: Bourbonnais Municipal Center, 700 Main Street N.W. Bourbonnais, IL

Time: 10:00 am

Hearing Officers: Courtney Avery and Kathy Olson

11-044

-
- 8 Individuals were in attendance but provided no testimony
 - 6 Individuals provided support testimony
 - 8 Individuals provided written testimony
 - 0 Individuals provided opposition testimony

ILLINOIS HEALTH FACILITIES and SERVICES REVIEW BOARD

Public Hearing Register

Project: Provena St Mary's Hospital #11-044
 Location: Bourbonnais Municipal Center, 700 Main Street N.W. Bourbonnais, IL
 Date: September 16, 2011
 Time: 10 PM

ATTENDANCE/NO TESTIMONY ON PROJECT

#	NAME (PLEASE PRINT)	AGENCY, ORGANIZATION OR INSTITUTION REPRESENTED OR RESIDENT (PLEASE PRINT)	CITY (PLEASE PRINT)	(S) SUPPORT (O) OPPOSED (N) NEUTRAL (PLEASE PRINT)
1	VONACE CHA (Print)	PSMH	Kankakee	S
2	Rubeca Barry - Vickie	PLC	Kankakee	S
3	Brian Lakovitz	Provena St. Mary's	Kankakee	S
4	Brian HAGGARD	Provena St. Mary's Hospital	Bourbonnais	S
5	Melissa Tanner	Provena St. Mary's Hospital	Kankakee	S
6	Sally Fazio	Provena St. Mary's Hospital	Kankakee	S
7	Kennia Rose	Provena Health	Mokena IL	S
8	THERESA BARNES	Provena St. Mary's	Kankakee	S
9				
10				
11				
12				
13				
14				



STATE OF ILLINOIS
HEALTH FACILITIES AND SERVICES REVIEW BOARD

Public Hearing Form

✓
UPA

Facility or Project Name: Provena St. Mary's Hospital

Project Number: 11-044

Date: September 16, 2011 Time: 10:00 am

TESTIMONY TO SUPPORT PROJECT

IDENTIFICATION

Name (Please Print) S. Anne M. Jaeger

City Kankakee Zip 60901

Signature *[Handwritten Signature]*

I. REPRESENTATION (This section is to be filled if the witness is appearing on behalf of any group, organization or other entity.)
Entity, Organization, etc. represented in this appearance (i.e., ABC Concerned Citizens for Health Care)

Member Body - Provena Health
Sponsorship Council of Resurrection
Health Care



STATE OF ILLINOIS
HEALTH FACILITIES AND SERVICES REVIEW BOARD

Public Hearing Form



Facility or Project Name: Provena St. Mary's Hospital

Project Number: 11-044

Date: September 16, 2011 Time: 10:00 am

TESTIMONY TO SUPPORT PROJECT

IDENTIFICATION

Name (Please Print) Amy M. LaFina

City Kankakee Zip 60901

Signature Amy M. LaFina

I. REPRESENTATION (This section is to be filled if the witness is appearing on behalf of any group, organization or other entity.)

Entity, Organization, etc. represented in this appearance (i.e., ABC Concerned Citizens for Health Care)

Provena Health testimony on behalf of

Michael Arno, CEO Provena St. Mary's

~~Sandra CEO Provena~~

~~Arno~~ Guy R. Wiebking + Sandra Arno
Provena Resurrection



STATE OF ILLINOIS
HEALTH FACILITIES AND SERVICES REVIEW BOARD

Public Hearing Form

Facility or Project Name: Provena St. Mary's Hospital



Project Number: 11-044

Date: September 16, 2011 Time: 10:00 am

TESTIMONY TO SUPPORT PROJECT

IDENTIFICATION

Name (Please Print)

THOMAS NEHRING

City

FRANKFORT

Zip

60423

Signature

I. REPRESENTATION (This section is to be filled if the witness is appearing on behalf of any group, organization or other entity.)

Entity, Organization, etc. represented in this appearance (i.e., ABC Concerned Citizens for Health Care)

PROVENA HEALTH



STATE OF ILLINOIS
HEALTH FACILITIES AND SERVICES REVIEW BOARD

Public Hearing Form



Facility or Project Name: Provena St. Mary's Hospital

Project Number: 11-044

Date: September 16, 2011 Time: 10:00 am

TESTIMONY TO SUPPORT PROJECT

IDENTIFICATION

Name (Please Print) Paula Simmons

City Kankakee Zip 60901

Signature Paula Simmons

I. REPRESENTATION (This section is to be filled if the witness is appearing on behalf of any group, organization or other entity.)

Entity, Organization, etc. represented in this appearance (i.e., ABC Concerned Citizens for Health Care)

Provena St Marys



STATE OF ILLINOIS
HEALTH FACILITIES AND SERVICES REVIEW BOARD

Public Hearing Form



Facility or Project Name: Provena St. Mary's Hospital

Project Number: 11-044

Date: September 16, 2011 Time: 10:00 am

TESTIMONY TO SUPPORT PROJECT

IDENTIFICATION

Name (Please Print) Amy Whitis

City Kankakee Zip 60901

Signature Amy White

I. REPRESENTATION (This section is to be filled if the witness is appearing on behalf of any group, organization or other entity.)

Entity, Organization, etc. represented in this appearance (i.e., ABC Concerned Citizens for Health Care)

Provena St. Mary's Hospital



STATE OF ILLINOIS
HEALTH FACILITIES AND SERVICES REVIEW BOARD

Public Hearing Form

Facility or Project Name: **Provena St. Mary's Hospital**

Project Number: **11-044**

Date: **September 16, 2011** Time: **10:00 am**

TESTIMONY TO SUPPORT PROJECT

IDENTIFICATION

Name (Please Print) Michelle Schaper

City Mokena Zip 60448

Signature Michelle Schaper

I. REPRESENTATION (This section is to be filled if the witness is appearing on behalf of any group, organization or other entity.)
Entity, Organization, etc. represented in this appearance (i.e., ABC Concerned Citizens for Health Care)

Provena Health

The Testimony of Sister Anne Jaeger, sscm

RE: Project Number 11044

The Merger of Provena Health and Resurrection Health Care

My name is Sister Anne Jaeger, and I am a member of the Sisters of the Holy Heart of Mary religious community. I am speaking today on behalf of the Member Body of Provena Health, which includes the Franciscan Sisters of the Sacred Heart, the Servants of the Holy Heart of Mary and the Sisters of Mercy of the Americas; and on behalf of the Sponsorship Council of Resurrection Health Care which includes the Sisters of the Holy Family of Nazareth and the Sisters of the Resurrection.

I am very pleased to be here today to share with the community an overview of what is a very exciting new chapter in the history of Provena St. Mary's Hospital and for our health system as a whole. I would also express my sincere appreciation to the Illinois Health Facilities and Services Review Board for their efforts to enable this hearing to take place in a timely and organized fashion.

By way of background, Provena Health is a Catholic health ministry that includes six hospitals, including Provena St. Mary's, 16 long-term care and senior residential facilities, numerous clinics, five home health agencies and other health-related activities operating in Illinois and Indiana. At the encouragement of Joseph Cardinal Bernardin, Provena Health came into being on December 1, 1997 from a human need to provide exceptional and compassionate health care services, and to be a sign of hope to all those in the communities it serves.

With a mission to build communities of healing and hope by compassionately responding to human need in the spirit of Jesus Christ, we have served our communities since our first hospitals opened their doors, as early as 1882.

From our very beginnings, we have been called to be much more than just a provider of health services. Rather, we are steeped in a culture that is committed to responding to the needs of those we are privileged to serve, delivering high quality care that is accessible to all.

Today, I am representing the five communities of women religious, who in faith and hope, seek the approval of the Illinois Health Facilities and Services Review Board to form a new Catholic health Ministry to serve the citizens of Illinois through a merger of Provena Health and Resurrection Healthcare Corporation.

As individual health systems, Provena Health and Resurrection Healthcare have long provided compassionate healing to those in need. In keeping with the true spirit of the courageous Sisters who came before us, ours have been ministries deeply focused on quality care for all, regardless of one's ability to pay.

Now, as we anticipate Health Reform and the sweeping changes that will transform the delivery of care as we have come to know it, we are keenly aware that the key to sustaining and growing our person-centered Mission lies in the strength of enduring partnerships we forge today.

Jointly rooted in the traditions of Catholic healthcare, the new Ministry will be distinguished by an ability to deliver quality care across the continuum from a broad and complementary base of leading edge locations and physician networks. From a foundation steeped in a shared heritage and set of values, the new Ministry would give rise to an enormous potential to truly improve the wellbeing of generations of Illinoisans to come.

With a dedicated and talented combined team of nearly 5,000 physicians, supported by over 22,000 employees, the new Ministry will play an important role in the economic vitality of the communities in which we serve. Above all, our partnership will remain true to the hallmarks of our Catholic identity: promoting and protecting the dignity of every individual from conception to death, caring for the poor and vulnerable and properly stewarding our precious people and financial resources.

Finally, I would like to also enter into the record a letter of support from His Eminence, Francis Cardinal George, Archbishop of Chicago. In his letter, he says, in part, "...I am grateful for the willingness of our state's premier Catholic providers to collaborate in order to meet the current challenges of health care. As they do now, the combined systems will operate without any restrictive admissions policies related to race, ethnic background, religion, payment source, or any other factor. The new system will continue to admit Medicare and Medicaid recipients and to care for those patients in need of charity care....This merger has my full support...."

In conclusion, the combined Provena Health and Resurrection Healthcare will strengthen and expand access to an exceptional tradition of quality care and service millions of Illinois residents who have come to know and depend upon for more than a century. On behalf of the women religious whose communities are sponsoring the proposal before you, we prayerfully request your approval. God bless you all and thank you very much.



19065 Hickory Creek Drive, Suite 300
Mokena, IL 60448
708 478 7967 Tel



7435 West Talcott Avenue
Chicago, IL 60631
773 792 5555 Tel

August 17, 2010

Ms. Courtney Avery
Administrator
Illinois Health Facilities and Services Review Board
525 West Jefferson
Springfield IL 62761

RE: IHFSRB Projects #11-40 -- #11-53

Dear Ms. Avery,

In early July, after several months of talks among the Sponsoring Congregations and between the Boards of Provena Health and Resurrection Health Care, as well as due diligence and discernment, we reached an agreement to come together to form a new patient, resident and family centered health Ministry that will serve a large portion of Illinois. The size and scope of the new Ministry will improve financial viability through a new structure that focuses on savings in corporate and administrative costs, while concentrating resources in our local health care ministries where care is provided. A new parent organization will oversee the existing Provena Health and Resurrection Health Care corporations.

Throughout the lengthy and thorough decision process, we came to realize our unique similarities. Our new Ministry will support innovation and growth under health reform. The new Ministry will be designed to excel at the patient, resident and family experience and provide high quality care and value across the continuum. In partnership with our physicians and employees, we are committed to building healthy communities by identifying community health needs and developing strategies to keep people healthy, as well as caring for the sick.

More than 4.5 million people live in areas we serve. The combined Ministry will encompass 12 hospitals, 28 long-term care and senior residential facilities, more than 50 primary and specialty care clinics, six home health agencies and the second largest behavioral health services program in the state. In addition, the Ministry includes Resurrection University, a fully-accredited, not-for-profit, Catholic-based specialty school for health sciences. We will have nearly 5,000 physicians and more than 22,000 employees.

We would like to express our sincere gratitude to the Illinois Health Facilities and Services Review Board for giving us the opportunity to tell our story at today's public hearing. We respect and appreciate the conscientious work to make this series of hearings possible so that we, our supporters, stakeholders and community partners have the opportunity to speak about our plans.

Sincerely,

Guy R. Wiebking
President and Chief Executive Officer
Provena Health

Sandra Bruce, FACHE
President and Chief Executive Officer
Resurrection Health Care

**Testimony of Thomas Nehring
System Senior Vice President, Mission Services
Provena Health**

RE: Project Numbers 11039 – 11051
The Merger of Provena Health and Resurrection Health Care

Good morning. My name is Tom Nehring, and I am System Senior Vice President of Mission Services at Provena Health. I am here today in support of the merger of Provena Health and Resurrection Health Care. In my role with Provena, I have been responsible for cultural integration of mission, vision, values and Catholic ministry identity; community benefit; advocacy & government relations; clinical and organizational ethics; leadership development and spirituality & spiritual care services across our health system for the past nine years. Previous to joining Provena, I did similar work for ten years at Wheaton Franciscan Healthcare, another Catholic health system. During this time I have also worked on national committees and boards involved with Catholic health care.

In my career within Catholic health care, I have come to know that our ministry as a whole works to bring alive the Gospel vision of justice and peace. We answer God's call to foster healing, act with compassion, and promote wellness for all persons and communities, with special attention to our neighbors who are poor, underserved, and most vulnerable. By our service, we strive to transform hurt into hope.

For more than 125 years, Provena Health ministries have existed for the sole purpose of caring for all regardless of their ability to pay. It is a commitment that is at the core of our Mission: to build communities of healing and hope by compassionately responding to human need in the spirit of Jesus Christ.

It is how we concretely live out directive #3 of the Ethical and Religious Directives for Catholic Health Care Services given to us by the Bishops of the United States: "In accord with its mission, Catholic health care should distinguish itself by **service to and advocacy** for those people whose social condition puts them at the margins of our society and makes them particularly vulnerable to discrimination: the poor; the uninsured and the underinsured;

children and the unborn; single parents; the elderly, those with incurable diseases and chemical dependencies; racial minorities; immigrants and refugees. In particular, the person with mental or physical disabilities, regardless of the cause or severity, must be treated as a unique person of incomparable worth, with the same right to life and to adequate health care as all other persons.” This is what we strive to do.

Today, I must tell you that that the needs of the poor and marginalized are greater than ever.

Newly released figures, detail that our service in 2010 resulted in a charitable impact upon our communities of more than \$186 million for Provena Health. Nearly sixty million of that was given away in free care at cost through charitable assistance, which totaled over \$35 million, and bad debts, which equaled nearly \$25 million.

Sixty-two percent of that \$186 million or \$114.5 million represented combined provisions of care not fully reimbursed from State and Federal government’s Medicaid and Medicare programs. In addition, Provena contributed over \$12 million in community benefit services, which are specific programs and activities aimed at meeting identified community health needs.

Taken as a whole, Provena Health’s contributions, on average, represented more than \$511,000 in charitable benefit each and every day.

[In Danville]

In the greater Danville area, Provena United Samaritans Medical Center’s 2010 charitable impact represented more than \$16 million, 40 percent of which (or \$6,732,497) was free care at cost and 46 percent of which (or \$7,591,823) represented combined provisions of care not fully reimbursed from Medicaid and Medicare. In addition, Provena United Samaritans contributed over \$2.2 million in community benefit services and had a combined daily charitable impact of more than \$45,000, on average, in 2010.

[In Champaign]

In the greater Champaign-Urbana area, Provena ministries, including Provena Covenant Medical Center, Provena Home Health, Provena Hospice and Provena Medical Group, delivered a total 2010 charitable impact of more than \$23 million, 38 percent of which (or

\$9,135,877) was free care at cost and 54 percent of which (or \$12,878,301) represented combined provisions of care not fully reimbursed from Medicaid and Medicare. In addition, the ministries in Champaign-Urbana contributed over \$1.8 million in community benefit services and had a combined daily charitable impact of more than \$65,000, on average.

[In Aurora]

Provena Health ministries in the greater Aurora community including Provena Mercy Medical Center, Provena Fox Knoll, Provena McAuley Manor and Provena Medical Group, have delivered a total 2010 charitable impact of nearly \$20 million, 51 percent of which (or \$10,249,634) was free care at cost – composed of charity care and bad debt - and 30 percent of which (or \$5,903,517) represented combined provisions of care not fully reimbursed from Medicaid and Medicare. In addition, these ministries contributed over \$3.7 million in community benefit services. Taken as a whole, Provena's contributions, on average, represented more than \$54,500 in charitable benefit each and every day.

[In Elgin]

Provena Health ministries in the greater Elgin community including Provena Saint Joseph Hospital, Provena Geneva Care Center, Provena Home Health, Provena Hospice, Provena Medical Group, Provena Pine View Care Center and The Greens of Elgin delivered a total 2010 charitable impact of more than \$34 million, 25 percent of which (or \$8,555,294) was free care at cost – composed of charity care and bad debt - and 71 percent of which (or \$24,446,605) represented combined provisions of care not fully reimbursed from Medicaid and Medicare. In addition, these ministries contributed over \$1.3 million in community benefit services. Taken as a whole, Provena's contributions, on average, represented more than \$94,000 in charitable benefit each and every day.

[In Joliet]

Provena Health ministries in the greater Joliet community including Provena Saint Joseph Medical Center, Provena Home Health, Provena Medical Group and Provena Villa Franciscan, delivered a total 2010 charitable impact of more than \$58 million, 29 percent of which (or \$17,492,731) was free care at cost – composed of charity care and bad debt - and 68 percent of which (or \$39,754,690) represented combined provisions of care not fully reimbursed from Medicaid and Medicare. In addition, these ministries contributed over \$1.6

million in community benefit services. Taken as a whole, Provena's contributions, on average, represented more than \$161,000 in charitable benefit each and every day.

[In Kankakee]

Provena Health ministries in the greater Kankakee community including Provena St. Mary's Hospital, Provena Fortin Villa Learning Center, Provena Heritage Village, Provena Home Health, Provena Medical Group, Provena Our Lady of Victory and Provena St. Mary's Adult Day Center delivered a total 2010 charitable impact of more than \$26 million, 28 percent of which (or \$7,402,750) was free care at cost – composed of charity care and bad debt - and 70 percent of which (or \$18,666,295) represented combined provisions of care not fully reimbursed from Medicaid and Medicare. In addition, these ministries contributed over \$600,000 in community benefit services. Taken as a whole, Provena's contributions, on average, represented more than \$73,000 in charitable benefit each and every day.

These amounts not only represent an enduring commitment to serve all regardless of their ability to pay, but also underscore the critical role Provena ministries play in the communities we serve, especially during difficult economic times. We recognize that among those we serve are often those most in need. We are privileged to have their trust, and we work daily to ensure we continue to provide nationally recognized, high quality care and services to each and every individual who comes through our doors.

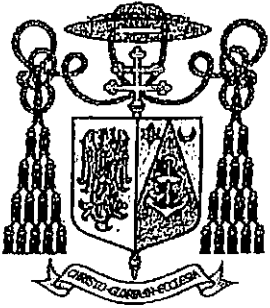
I am pleased to submit into the record Provena Health's 2010 Report to Our Communities which details at a much greater level our enduring commitment to serve all and the charitable impact we deliver within the communities we serve.

As complexities within our nation's health care system evolve, we are compelled to adapt and innovate; to preserve, strengthen and grow our ministry for the benefit of the millions of people in Illinois who depend upon us for care. And that is why we seek your approval for our partnership and collaboration with Resurrection Health Care.

Together as Catholic healthcare providers, we will embrace the work that lies ahead to create a health care system that is available and accessible to everyone; that is health and prevention-oriented; that rewards quality not quantity; that is transparent and consensus-

driven; safe, that is effective and patient-centered; and that addresses health needs at all stages of life, from conception to natural death.

Thank you.



ARCHDIOCESE OF CHICAGO

OFFICE OF THE ARCHBISHOP

March 17, 2011

Ms. Courtney Avery
Administrator
Illinois Health Facilities and Services Review Board
525 West Jefferson
Springfield, Illinois 62761

Dear Ms. Avery,

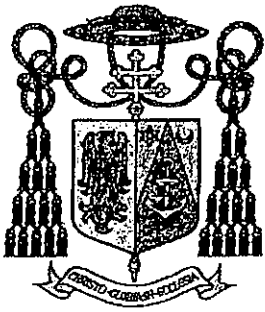
Resurrection Health Care Corporation and Provena Health have proposed a merging of the two systems that will better position the combined system's hospitals, long-term care facilities, outpatient centers and other programs and facilities to continue to serve the patients and communities that have traditionally looked to them for care. This system merger is intended to improve the financial viability of both entities as well as enhance patient, employee and medical staff satisfaction. Through a shared culture and integrated leadership, this merger would also position the combined system for innovation and adaptation under health care reform.

The proposed merger will position Resurrection and Provena to strengthen and improve access to Catholic health care in Illinois. This has long been an area of great interest and concern for me, and I am grateful for the willingness of two of our state's premier Catholic providers to collaborate in order to meet the current challenges in health care. As they do now, the combined systems will operate without any restrictive admissions policies related to race, ethnic background, religion, payment source, or any other factor. The new system will continue to admit Medicare and Medicaid recipients and to care for those patients in need of charity care.

This proposed merger has my full support and I can assure you that both Resurrection Health Care and Provena Health are working together collegially and in the best interests of their communities to strengthen and improve access to high quality, highly accountable Catholic health care in the State of Illinois.

Sincerely yours,

Francis Cardinal George, O.M.I.
Archbishop of Chicago



ARCHDIOCESE OF CHICAGO

OFFICE OF THE ARCHBISHOP

March 17, 2011

Ms. Courtney Avery
Administrator
Illinois Health Facilities and Services Review Board
525 West Jefferson
Springfield, Illinois 62761

Dear Ms. Avery,

Resurrection Health Care Corporation and Provena Health have proposed a merging of the two systems that will better position the combined system's hospitals, long-term care facilities, outpatient centers and other programs and facilities to continue to serve the patients and communities that have traditionally looked to them for care. This system merger is intended to improve the financial viability of both entities as well as enhance patient, employee and medical staff satisfaction. Through a shared culture and integrated leadership, this merger would also position the combined system for innovation and adaptation under health care reform.

The proposed merger will position Resurrection and Provena to strengthen and improve access to Catholic health care in Illinois. This has long been an area of great interest and concern for me, and I am grateful for the willingness of two of our state's premier Catholic providers to collaborate in order to meet the current challenges in health care. As they do now, the combined systems will operate without any restrictive admissions policies related to race, ethnic background, religion, payment source, or any other factor. The new system will continue to admit Medicare and Medicaid recipients and to care for those patients in need of charity care.

This proposed merger has my full support and I can assure you that both Resurrection Health Care and Provena Health are working together collegially and in the best interests of their communities to strengthen and improve access to high quality, highly accountable Catholic health care in the State of Illinois.

Sincerely yours,

Francis Cardinal George, O.M.I.
Archbishop of Chicago

**Testimony of Amy La Fine
Chief Nurse Executive
Provena St. Mary's Hospital**

RE: Project Number 11044
The Merger of Provena Health and Resurrection Health Care

Good morning and thank you for the opportunity to not only share with the public our goals for what we hope to achieve through a merger between Provena Health and Resurrection Health Care, but to also describe the benefits of this new partnership to the people of the greater Kankakee community. My name is Amy LaFine, and I am the Chief Nurse Executive at Provena St. Mary's Hospital in Kankakee. I am pleased to share testimony on behalf of Michael Arno, our President and Chief Executive Officer.

I would like to begin by submitting into the record a letter from Guy Wiebking, the President and Chief Executive Officer of Provena Health and Sandra Bruce, the President and Chief Executive Officer of Resurrection Health Care which states in part: "The size and scope of the new Ministry will improve financial viability through a new structure that focuses on savings in corporate and administrative costs, while concentrating resources in our local health care ministries where care is provided."

Concentrating resources in our local health care ministries where care is provided – I would like to assure the Board and our community that our leaders "get it." They know that success in health care is not derived from big corporate overhead; but rather by investing in caring for people in the communities in which we are privileged to serve.

For local hospitals like Provena St. Mary's, there are number of excellent benefits to being part of health system, and especially one that will be among the largest in our State. As a member of Provena Health, our local hospital in Kankakee – and ultimately, our patients and employees – have time and again benefitted from the System's "think global, act local" approach. From technological enhancements that improve quality and patient safety to leading-edge diagnostics to patient and family-centered renovations and new programs, our local hospital ministries have grown in ways we never could have without the support and resources of a greater system.

As health care faces unprecedented changes, as we confront decreased reimbursements, as the need for charity care and financial assistance becomes greater than ever and as our aging population tests the system as never before, hospital survival lies in what we at Provena call "Systemness." That is maximizing efficiency and cost savings by centralizing "back office" type functions at a Corporate level, so that resources can be focused on where they matter most – in caring for our local communities.

We have some of that now as being part of Provena, and we stand to gain more under the new organization. In fact, work is already underway to expand our charity care and financial assistance programs where the need is great due in large part to the struggling economy.

There, to continue to ensure that we do not lose sight of what's important to our local communities, will be our wonderful and deeply dedicated local Boards of Directors which will operate as they currently do under the new structure. Our local Foundations will continue to do the same, with our locally raised dollars staying right here, to make a difference in the lives our friends and neighbors.

The partnership will also more strongly support our role as a leading employer in the markets we serve, with our employees enjoying the stability of being part of a larger health system, with competitive pay and benefits, career advancement opportunities and a faith-based culture of diversity, camaraderie, respect and compassion.

Above all, our merger will preserve and strengthen for generations to come the promise our Founding Sisters made here in Kankakee over 100 years ago...that through our ministry, all in need would have healing and hope in the spirit of Jesus Christ.

On behalf of the Provena family, I would like to thank all who joined us today in person or in spirit for their support of our new future and also to the Illinois Health Facilities and Services Review Board for the opportunity to tell our story. Thank you.



September 16, 2011

Ms. Courtney Avery, Administrator
Illinois Health Facilities and
Services Review Board
525 West Jefferson Street, 2nd Floor
Springfield, IL 62761

RE: PROJECT # 11044
Merger of Provena Health and Resurrection Health Care Corporation

Dear Ms. Avery:

After more than 15 years of proud service, I can tell you Provena St. Mary's Hospital is as dedicated to the growth and development of its more than 900 employees as it is to providing the highest quality care to the patients it is privileged to serve. I know because my nursing career is the direct result of this commitment.

I decided to become an obstetrics nurse later in life. I worked as an OB tech at Provena St. Mary's while in nursing school, and was offered a full-time OB nursing position upon graduation. My career since then has been a steady climb into a leadership role, with each step along the way supported whole-heartedly not only by my peers but by the organization as a whole. When I felt like I had reached my potential at the bedside and wanted additional responsibilities, my director helped me locate opportunities for advancement. At around the same time, Provena St. Mary's was in the midst of developing a cohort Bachelor of Science in Nursing program with Olivet Nazarene University. In addition to the convenience and comfort of attending class with my co-workers right on site at the hospital, I have been able to take advantage of Provena's generous tuition reimbursement program, which was one of the main factors in my decision to pursue additional education with three children in college at the same time! I am now just one year away from my degree and deeply thankful for the opportunity Provena St. Mary's has provided me to further develop my skills.

I know that dedication to career growth is not unique to Provena St. Mary's. It's also apparent at our Provena sister ministries and at Resurrection Health Care as well. A merger of our two systems will provide additional resources to help develop our expert care teams in order to best serve those who depend on us for care.

Sincerely,

A handwritten signature in cursive script that reads "Paula Simmons" followed by a small circular mark.

Paula Simmons
Patient Care Manager, Obstetrics



September 16, 2011

Ms. Courtney Avery, Administrator
Illinois Health Facilities and
Services Review Board
525 West Jefferson Street, 2nd Floor
Springfield, IL 62761

RE: PROJECT # 11044
Merger of Provena Health and Resurrection Health Care Corporation

Dear Ms. Avery:

It's no surprise to me that Provena St. Mary's Hospital has twice been named a "Workplace of Distinction" by Morehead Associates. The award recognizes organizations that are dedicated to creating an engaged workforce that provides safe, superior patient care. That has absolutely been my experience. Those I work with at Provena St. Mary's aren't my co-workers, they're my family. It takes a special organization to create an environment like ours – one that is equally dedicated to employee care as it is to patient care.

Over my 15 year career, I have been able to take advantage of skill development opportunities when I decided to transition from the intensive care unit to my current role in clinical education and tuition reimbursement when pursuing my Masters program. I've also been the grateful recipient of mentoring from peers who have been long-standing employees at Provena St. Mary's undoubtedly because they feel just as supported in their careers as I do. In addition to competitive pay, the opportunity I have to set aside money as part of my retirement benefit - a portion of which is matched by Provena - is a great relief. Financial counselors are also on site regularly to help answer questions fellow employees and I have about investments and other planning, and I've found that counseling to be very helpful.

I know that being a part of a system has allowed Provena St. Mary's Hospital to offer these opportunities and I'm confident that a merger with Resurrection Health Care will allow more of the same. I respectfully urge your approval of the merger application and thank you for your consideration.

Sincerely,

A handwritten signature in cursive script that reads "Amy Whitis".

Amy Whitis
Clinical Educator



Clancy-Gernon Funeral Homes Inc.

295 Main Street NW Bourbonnais, IL 60914

Phones 815/932-1214 Fax 815/932-4530

August 16, 2011

Ms. Courtney Avery, Administrator
Illinois Health Facilities and
Services Review Board
525 West Jefferson Street, 2nd Floor
Springfield, IL 62761

RE: PROJECT # 11044
Merger of Provena Health and Resurrection Health Care Corporation

Dear Ms. Avery:

As Chair of the Provena St. Mary's Hospital (PSMH) Board of Directors, I am pleased to extend my support of a merger between Provena Health and Resurrection Health Care. For the past 9 years as a member of the PSMH Board, including the past 1 year(s) as its Chair, I have been proud to represent the hospital throughout the Kankakee community.

To see the true value of a health system, one needs to look no further than Provena St. Mary's. In 1997, with the formation of its parent company, Provena Health, PSMH became a ministry within a larger Catholic health system. Over the course of the next 14 years, the value of this "systemness" has proved immeasurable during both difficult and prosperous times.

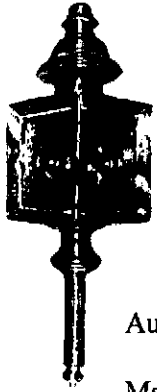
Thanks to increased access to capital as part of a larger system, PSMH has been able to make numerous investments including a new Endocrine and Diabetes Clinic, expansion of its ambulatory care network, critical care beds with enhanced technology for patient comfort and staff support, new ultrasound and digital mammography equipment, and much more.

Being a part of Provena Health has made Provena St. Mary's Hospital a stronger provider of health services for our local community. A merger with Resurrection Health Care will allow us to grow even stronger and continue our important work for the benefit of all those in the greater Kankakee area and beyond.

I urge your support of our merger application.

Sincerely,

Tim Gernon



Clancy-Gernon Funeral Homes Inc.

295 Main Street NW Bourbonnais, IL 60914

Phones 815/932-1214 Fax 815/932-4530

August 16, 2011

Ms. Courtney Avery, Administrator
Illinois Health Facilities and
Services Review Board
525 West Jefferson Street, 2nd Floor
Springfield, IL 62761

RE: PROJECT # 11044
Merger of Provena Health and Resurrection Health Care Corporation

Dear Ms. Avery:

As Chair of the Provena St. Mary's Hospital (PSMH) Board of Directors, I am pleased to extend my support of a merger between Provena Health and Resurrection Health Care. For the past 9 years as a member of the PSMH Board, including the past 1 year(s) as its Chair, I have been proud to represent the hospital throughout the Kankakee community.

To see the true value of a health system, one needs to look no further than Provena St. Mary's. In 1997, with the formation of its parent company, Provena Health, PSMH became a ministry within a larger Catholic health system. Over the course of the next 14 years, the value of this "systemness" has proved immeasurable during both difficult and prosperous times.

Thanks to increased access to capital as part of a larger system, PSMH has been able to make numerous investments including a new Endocrine and Diabetes Clinic, expansion of its ambulatory care network, critical care beds with enhanced technology for patient comfort and staff support, new ultrasound and digital mammography equipment, and much more.

Being a part of Provena Health has made Provena St. Mary's Hospital a stronger provider of health services for our local community. A merger with Resurrection Health Care will allow us to grow even stronger and continue our important work for the benefit of all those in the greater Kankakee area and beyond.

I urge your support of our merger application.

Sincerely,

Tim Gernon

ILLINOIS STATE SENATE

MEMBER

- AGRICULTURE & CONSERVATION
- HIGHER EDUCATION
- LABOR
- REVENUE

thutchinson@senatedem.ilga.gov
www.senatedem.ilga.gov



VICE CHAIR

- TRANSPORTATION

MEMBER

- LEGISLATIVE INFORMATION SYSTEMS

TOI W. HUTCHINSON
STATE SENATOR
40TH DISTRICT

August 5, 2011

Ms. Courtney Avery, Administrator
Illinois Health Facilities and
Services Review Board
525 West Jefferson Street, 2nd Floor
Springfield, IL 62761

RE: PROJECT # 11044
Merger of Provena Health and Resurrection Health Care Corporation

Dear Ms. Avery:

I represent the 40th Legislative District as a member of the Illinois Senate and have long believed this area to be unique – it is both rural and urban, containing wealthier areas and those in need across both densely and less populated communities. Such a unique area offers correspondingly unique opportunities and challenges. However, one thing that remains consistent no matter where you travel throughout the District, is our communities' need for high quality healthcare close to home.

In addition to my legislative work, I have more than 15 years of experience in community leadership and am proud to also currently be serving as a member of the PSMH's Board of Directors. I can tell you that Provena St. Mary's physicians, leaders, staff and volunteers remain as committed to their Mission to build communities of healing and hope in the spirit of Jesus Christ as their founding Sisters were nearly 115 years ago. They understand their responsibility to provide the absolute highest quality of patient care. That means seeking out the very best in health care professionals and services in order to meet the community's needs. In today's unstable times, we need your support.

A merger of PSMH's parent company, Provena Health, with Resurrection Health Care will create one of the largest health systems in the State, providing services for patients and residents across the continuum through nearly 100 sites of care, employing over 22,000 individuals across ministries supported by over 5,000 physicians. This merger will provide local ministries like Provena St. Mary's additional support in order to have a greater and lasting impact on the lives of all those served.

I ask that the Health Facilities and Services Review Board support the application for the merger of Provena Health and Resurrection Health Care.

Sincerely,

A handwritten signature in cursive script, appearing to read "Toi".

Senator Toi Hutchinson
State of Illinois 40th District

ILLINOIS STATE SENATE

MEMBER

- AGRICULTURE & CONSERVATION
- HIGHER EDUCATION
- LABOR
- REVENUE

thutchinson@senatedem.ilga.gov
www.senatedem.ilga.gov



VICE CHAIR

- TRANSPORTATION

MEMBER

- LEGISLATIVE INFORMATION SYSTEMS

TOI W. HUTCHINSON
STATE SENATOR
40TH DISTRICT

August 5, 2011

Ms. Courtney Avery, Administrator
Illinois Health Facilities and
Services Review Board
525 West Jefferson Street, 2nd Floor
Springfield, IL 62761

RE: PROJECT # 11044
Merger of Provena Health and Resurrection Health Care Corporation

Dear Ms. Avery:

I represent the 40th Legislative District as a member of the Illinois Senate and have long believed this area to be unique – it is both rural and urban, containing wealthier areas and those in need across both densely and less populated communities. Such a unique area offers correspondingly unique opportunities and challenges. However, one thing that remains consistent no matter where you travel throughout the District, is our communities' need for high quality healthcare close to home.

In addition to my legislative work, I have more than 15 years of experience in community leadership and am proud to also currently be serving as a member of the PSMH's Board of Directors. I can tell you that Provena St. Mary's physicians, leaders, staff and volunteers remain as committed to their Mission to build communities of healing and hope in the spirit of Jesus Christ as their founding Sisters were nearly 115 years ago. They understand their responsibility to provide the absolute highest quality of patient care. That means seeking out the very best in health care professionals and services in order to meet the community's needs. In today's unstable times, we need your support.

A merger of PSMH's parent company, Provena Health, with Resurrection Health Care will create one of the largest health systems in the State, providing services for patients and residents across the continuum through nearly 100 sites of care, employing over 22,000 individuals across ministries supported by over 5,000 physicians. This merger will provide local ministries like Provena St. Mary's additional support in order to have a greater and lasting impact on the lives of all those served.

I ask that the Health Facilities and Services Review Board support the application for the merger of Provena Health and Resurrection Health Care.

Sincerely,

A handwritten signature in cursive script, appearing to read "Toi".

Senator Toi Hutchinson
State of Illinois 40th District

Westwood OB/GYN LTD
375 North Wall Street, Ste. P410
Kankakee, Illinois 60901
815-932-7474

August 5, 2011

Ms. Courtney Avery, Administrator
Illinois Health Facilities and
Services Review Board
525 West Jefferson Street, 2nd Floor
Springfield, IL 62761

RE: PROJECT # 11044
Merger of Provena Health and Resurrection Health Care Corporation

Dear Ms. Avery:

As president of the medical staff at Provena St. Mary's Hospital (PSMH), I respectfully urge your approval of the merger between Provena Health and Resurrection Health Care.

For nearly 115 years, the medical team at PSMH has been dedicated to providing those in our communities with leading-edge, patient-centered, high quality care. Over the years, our efforts have been recognized with prestigious national distinctions from organizations like HealthGrades®, The Joint Commission, various accrediting bodies and more. Our dedication to quality is matched only by our commitment to service, as evidenced by having been named a Workplace of Distinction by Morehead Associates two consecutive years.

Together with PSMH administration, we have successfully built critical programs and services to the hospital, including a Level II Emergency/Trauma Center, a regional cancer center, rehabilitation services, a family birthing center, pediatric unit, mental health services, sleep diagnostic center, renal dialysis, wound care, endocrinology services, a total wellness center and much more. Thanks to these programs and the exceptional expertise of our physicians and staff, PSJMC is able to provide high quality healthcare conveniently close to home.

A merger with Resurrection Health Care will allow us to continue to expand our clinical offerings and our expert care team in order to best serve those who depend on us for care.

Sincerely,


Roger Taylor, M.D.

Westwood OB/GYN LTD
375 North Wall Street, Ste. P410
Kankakee, Illinois 60901
815-932-7474

August 5, 2011

Ms. Courtney Avery, Administrator
Illinois Health Facilities and
Services Review Board
525 West Jefferson Street, 2nd Floor
Springfield, IL 62761

RE: PROJECT # 11044
Merger of Provena Health and Resurrection Health Care Corporation

Dear Ms. Avery:

As president of the medical staff at Provena St. Mary's Hospital (PSMH), I respectfully urge your approval of the merger between Provena Health and Resurrection Health Care.

For nearly 115 years, the medical team at PSMH has been dedicated to providing those in our communities with leading-edge, patient-centered, high quality care. Over the years, our efforts have been recognized with prestigious national distinctions from organizations like HealthGrades®, The Joint Commission, various accrediting bodies and more. Our dedication to quality is matched only by our commitment to service, as evidenced by having been named a Workplace of Distinction by Morehead Associates two consecutive years.

Together with PSMH administration, we have successfully built critical programs and services to the hospital, including a Level II Emergency/Trauma Center, a regional cancer center, rehabilitation services, a family birthing center, pediatric unit, mental health services, sleep diagnostic center, renal dialysis, wound care, endocrinology services, a total wellness center and much more. Thanks to these programs and the exceptional expertise of our physicians and staff, PSJMC is able to provide high quality healthcare conveniently close to home.

A merger with Resurrection Health Care will allow us to continue to expand our clinical offerings and our expert care team in order to best serve those who depend on us for care.

Sincerely,



Roger Taylor, M.D.



Maternity of the
Blessed Virgin Mary Church

308 E Marsile St † Bourbonnais, IL 60914-1928 † 815-933-8285

August 5, 2011

Ms. Courtney Avery, Administrator
Illinois Health Facilities and
Services Review Board
525 West Jefferson Street, 2nd Floor
Springfield, IL 62761

RE: PROJECT # 11044
Merger of Provena Health and Resurrection Health Care Corporation

Dear Ms. Avery:

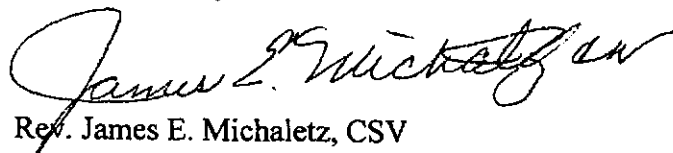
As a priest in residence at Maternity Blessed Virgin Mary in Bourbonnais and as a member of the Provena St. Mary's Hospital Board of Directors, I am pleased to give my support of the merger between Provena Health and Resurrection Health Care.

For more than 125 years, Provena Health ministries, including Provena St. Mary's Hospital, have existed for the sole purpose of caring for all those we are privileged to serve, with special attention to the poor and vulnerable. It's a commitment that's at the core of our Mission: to build communities of healing and hope by compassionately responding to human need in the spirit of Jesus Christ.

A merger with Resurrection Health Care will allow PSMH to continue to expand our clinical offerings and our expert care team in order to best serve those who depend on us for care. While this means great things for people throughout the greater Kankakee area, the impact of a merger will be felt across a vast portion of our state. In fact, more than 4.5 million people who live in areas served by Provena and Resurrection will benefit from transformative healthcare delivered with compassion, dignity and respect at every stage of life.

Please approve the Certificate of Need application for the merger of Provena Health and Resurrection Health Care.

Sincerely,


Rev. James E. Michaletz, CSV



Maternity of the Blessed Virgin Mary Church

308 E Marsile St † Bourbonnais, IL 60914-1928 † 815-933-8285

August 5, 2011

Ms. Courtney Avery, Administrator
Illinois Health Facilities and
Services Review Board
525 West Jefferson Street, 2nd Floor
Springfield, IL 62761

RE: PROJECT # 11044
Merger of Provena Health and Resurrection Health Care Corporation

Dear Ms. Avery:

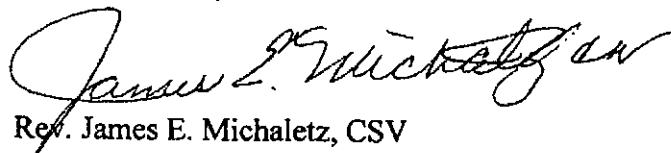
As a priest in residence at Maternity Blessed Virgin Mary in Bourbonnais and as a member of the Provena St. Mary's Hospital Board of Directors, I am pleased to give my support of the merger between Provena Health and Resurrection Health Care.

For more than 125 years, Provena Health ministries, including Provena St. Mary's Hospital, have existed for the sole purpose of caring for all those we are privileged to serve, with special attention to the poor and vulnerable. It's a commitment that's at the core of our Mission: to build communities of healing and hope by compassionately responding to human need in the spirit of Jesus Christ.

A merger with Resurrection Health Care will allow PSMH to continue to expand our clinical offerings and our expert care team in order to best serve those who depend on us for care. While this means great things for people throughout the greater Kankakee area, the impact of a merger will be felt across a vast portion of our state. In fact, more than 4.5 million people who live in areas served by Provena and Resurrection will benefit from transformative healthcare delivered with compassion, dignity and respect at every stage of life.

Please approve the Certificate of Need application for the merger of Provena Health and Resurrection Health Care.

Sincerely,


Rev. James E. Michaletz, CSV

August 5, 2011

Ms. Courtney Avery, Administrator
Illinois Health Facilities and
Services Review Board
525 West Jefferson Street, 2nd Floor
Springfield, IL 62761

RE: PROJECT # 11044
Merger of Provena Health and Resurrection Health Care Corporation

Dear Ms. Avery:

As a member of the Provena St. Mary's Hospital (PSMH) Board of Directors, I am pleased to extend my support of a merger between Provena Health and Resurrection Health Care.

For more than 125 years, Provena Health ministries, including Provena St. Mary's Hospital, have existed for the sole purpose of caring for all those we are privileged to serve, with special attention to the poor and vulnerable. This commitment is at the core of our Mission: to build communities of healing and hope by compassionately responding to human need in the spirit of Jesus Christ.

A merger with Resurrection Health Care will allow PSMH to continue to expand our clinical offerings and our expert care team to best serve those who depend on us for care. While this means great things for people throughout the greater Kankakee area, the impact of a merger will be felt across a vast portion of our state. In fact, more than 4.5 million people who live in areas served by Provena and Resurrection will benefit from transformative healthcare delivered with compassion, dignity and respect at every stage of life.

Please approve the Certificate of Need application for the merger of Provena Health and Resurrection Health Care.

Sincerely,


Michael O'Brien

August 5, 2011

Ms. Courtney Avery, Administrator
Illinois Health Facilities and
Services Review Board
525 West Jefferson Street, 2nd Floor
Springfield, IL 62761

RE: PROJECT # 11044
Merger of Provena Health and Resurrection Health Care Corporation

Dear Ms. Avery:

As a member of the Provena St. Mary's Hospital (PSMH) Board of Directors, I am pleased to extend my support of a merger between Provena Health and Resurrection Health Care.

For more than 125 years, Provena Health ministries, including Provena St. Mary's Hospital, have existed for the sole purpose of caring for all those we are privileged to serve, with special attention to the poor and vulnerable. This commitment is at the core of our Mission: to build communities of healing and hope by compassionately responding to human need in the spirit of Jesus Christ.

A merger with Resurrection Health Care will allow PSMH to continue to expand our clinical offerings and our expert care team to best serve those who depend on us for care. While this means great things for people throughout the greater Kankakee area, the impact of a merger will be felt across a vast portion of our state. In fact, more than 4.5 million people who live in areas served by Provena and Resurrection will benefit from transformative healthcare delivered with compassion, dignity and respect at every stage of life.

Please approve the Certificate of Need application for the merger of Provena Health and Resurrection Health Care.

Sincerely,


Michael O'Brien

P. O. Box 1286
Kankakee, Illinois 60901
Tel 815-932-7476
Fax 815-932-7506
Info@MyUnitedWay.org
www.MyUnitedWay.org



United Way
of Kankakee County

August 5, 2011

Ms. Courtney Avery, Administrator
Illinois Health Facilities and
Services Review Board
525 West Jefferson Street, 2nd Floor
Springfield, IL 62761

RE: PROJECT # 11044
Merger of Provena Health and Resurrection Health Care Corporation

Dear Ms. Avery:

For many years, the United Way of Kankakee County has been the grateful recipient of generous monetary support from Provena St. Mary's Hospital and its employees, totaling nearly \$13,000 in 2010 alone. Equally as important as the funding, however, is the critical partnership we have forged together to address the needs of those in our communities.

The United Way seeks to improve lives by mobilizing the caring power of our community in order foster independence, nurture children, provide basic needs, and strengthen and support families. However, none of this important work is possible without vital community partners like Provena St. Mary's Hospital.

A merger of the medical center's parent company, Provena Health, and Resurrection Health Care will serve to make Provena St. Mary's Hospital stronger, preserving its faith-based mission and continually enhancing partnerships with community organizations – like the United Way – for the betterment of all those we collectively serve

Thank you for your consideration of their application.

Sincerely,

A handwritten signature in black ink that reads "Greg Carrell". The signature is written in a cursive, flowing style.

Greg Carrell
Executive Director

P. O. Box 1286
Kankakee, Illinois 60901
Tel 815-932-7476
Fax 815-932-7506
Info@MyUnitedWay.org
www.MyUnitedWay.org



United Way
of Kankakee County

August 5, 2011

Ms. Courtney Avery, Administrator
Illinois Health Facilities and
Services Review Board
525 West Jefferson Street, 2nd Floor
Springfield, IL 62761

RE: PROJECT # 11044
Merger of Provena Health and Resurrection Health Care Corporation

Dear Ms. Avery:

For many years, the United Way of Kankakee County has been the grateful recipient of generous monetary support from Provena St. Mary's Hospital and its employees, totaling nearly \$13,000 in 2010 alone. Equally as important as the funding, however, is the critical partnership we have forged together to address the needs of those in our communities.

The United Way seeks to improve lives by mobilizing the caring power of our community in order foster independence, nurture children, provide basic needs, and strengthen and support families. However, none of this important work is possible without vital community partners like Provena St. Mary's Hospital.

A merger of the medical center's parent company, Provena Health, and Resurrection Health Care will serve to make Provena St. Mary's Hospital stronger, preserving its faith-based mission and continually enhancing partnerships with community organizations – like the United Way – for the betterment of all those we collectively serve

Thank you for your consideration of their application.

Sincerely,

A handwritten signature in cursive script that reads "Greg Carrell".

Greg Carrell
Executive Director